

ABDOUN PROJECT

The perfect home for your family




TAJ ALSAIFA
REAL ESTATE DEVELOPMENT

01

ELECTRICAL

Abdoun Al Shamali Project



ELECTRICAL SYSTEMS

The following electrical systems are included in the project:

1ST SERVICE

Central gas boiler



Gas boilers are the most popular choice for heating and hot water.

2nd SERVICE

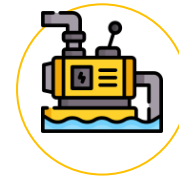
Motion detector



The motion detector is an electrical device that detects nearby motion using a sensor. (They are installed in the main entrance and the apartment bathroom).

3rd SERVICE

Water pump



Bottom and top water pump (Wilo).

ELECTRICAL SYSTEMS

The following mechanical systems are included in the project:

4th SERVICE

Main internet
distribution system



Collection of online
travel portals or travel
agencies.

5th SERVICE

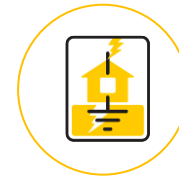
Central tv system



Central TV system is a
mandatory solution for
multi-room units.

6th SERVICE

Earth leakage
protection system



Shock-prevention
device used in
electrical systems with
high Earth impedance.

ELECTRICAL SYSTEMS

The following mechanical systems are included in the project:

7th SERVICE

Electric shutters
control



Easy control

8th SERVICE

Anti-theft system



Home security system

9th SERVICE

Fire alarm system



Fire alarm
systems ensure the
safety of
your home 24/7,
day or night.

ELECTRICAL SYSTEMS

The following mechanical systems are included in the project:

10th SERVICE

Water level meter



A water level meter is typical equipment for measuring the exact level of water in groundwater observation wells.

11th SERVICE

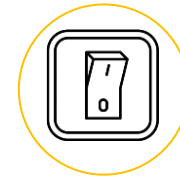
Intercom



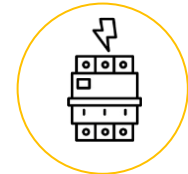
Smart audio and video intercom.

12th SERVICE

Switches & Circuit Breakers



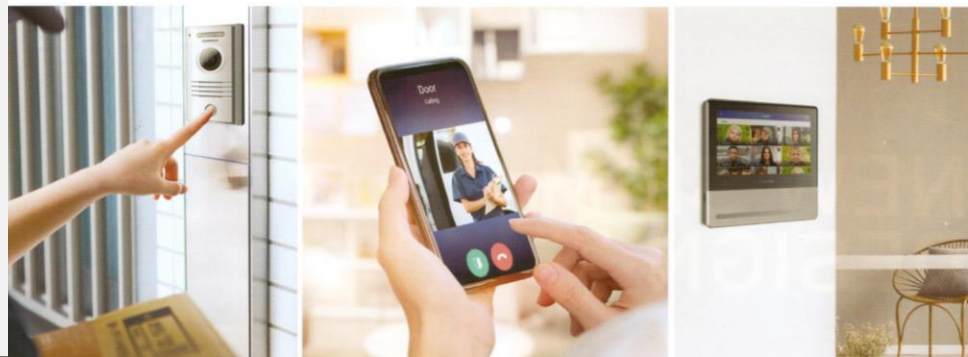
Italian Bticino sockets & Switches



German Schneider Circuit Breakers

Commax Color TFT LCD High-Tech Intercom Monitor CDV-70QT

7" Inch Full Touch LCD Monitor



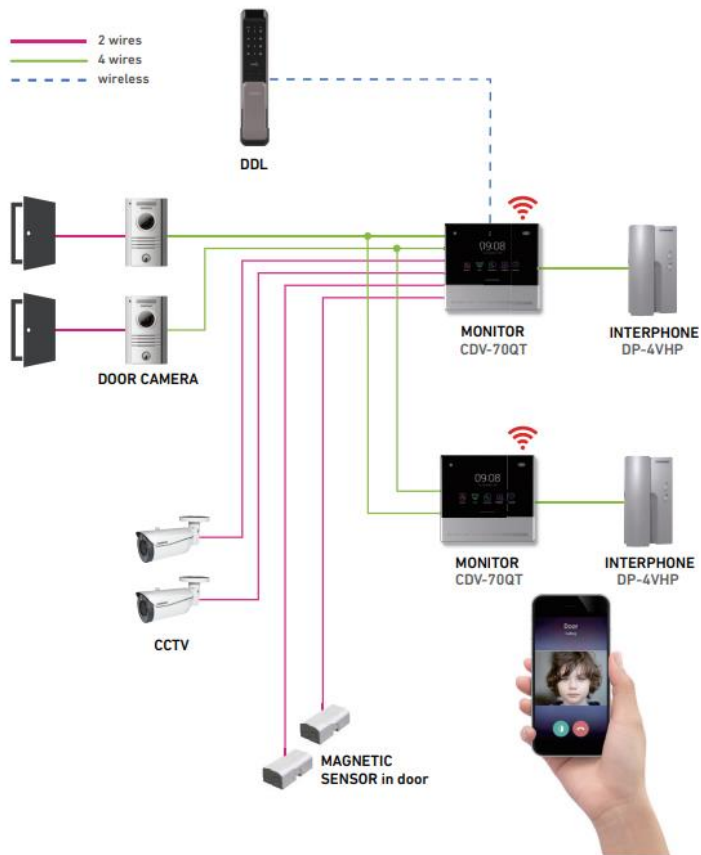
T A J A L S A F A R E A L E S T A T E D E V E L O P M E N T



WIFI-enabled 7-inch smart full-touch video intercom display with smartphone connectivity. This intercom system can be used to extend your home access control to your phone. View and interact with visitors from all over the world.



DIAGRAM



PRODUCT FEATURES

- User friendly UI/UX
- Answer video call and open door by mobile app. (Wi-Fi based)
- Connectable with 1.0MP AHD door camera
- Save the images by motion detection
- Built-in memory (50cuts, 640x360), SD card slot (128GB)
- Audio phone connectable (DP-4VHP)
- Digital door locks connectable (RF 447 MHz module option)
- 2 door cameras connectable • 2 CCTV cameras connectable
- Magnetic sensor connectable for security mode (Mobile alarm function)
- Save the visitor's image and video

PRODUCT SPECIFICATION

Power source	AC 100-240V, 50/60Hz (To SMPS)
Display	7 inch Full Touch LCD
Mount type	Wall mounted type
Memory	Built-in memory(50cuts, 640x360), SD card slot (128GB)
Resolution	1024 X 600
Network	Wi-Fi 2.4Ghz
Camera	Up to AHD 1MP
Wiring	Door camera : 4 wires Magnetic sensor(in door) : 2 wires x2
Dimension (mm)	250(W) x 210(H) x 22(D)

HIKVISION CAMERA DS-2CE16H0T-ITPF

Specification

Camera	
Image Sensor	5 MP CMOS image sensor
Resolution	2560 (H) × 1944 (V)
Min. Illumination	Color: 0.01 Lux @ (F1.2, AGC ON), 0 Lux with IR
Shutter Time	PAL: 1/25 s to 1/50,000 s NTSC: 1/30 s to 1/50,000 s
Lens	2.8 mm, 3.6 mm, 6 mm fixed lens
Horizontal Field of View	85.5° (2.8 mm), 80.1° (3.6 mm), 57.1° (6 mm)
Lens Mount	M12
Day & Night	IR cut filter
Angle Adjustment	Pan: 0° to 360°; Tilt: 0° to 180°; Rotate: 0° to 360°
Synchronization	Internal synchronization
Frame Rate	PAL: 5 MP@20fps, 4 MP@25fps, 1080p@25fps NTSC: 5 MP@20fps, 4 MP@30fps, 1080p@30fps



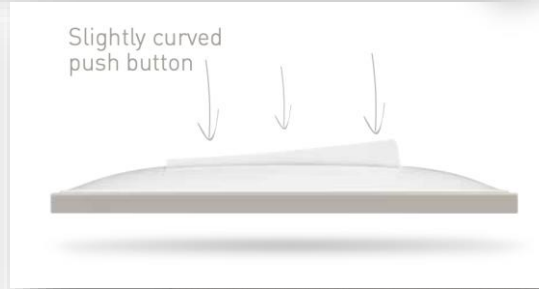


bticino

Taj Al Safa

Description

The switches that were placed in the project are Classia models, which are made by the Italian company BTicino International, a world authority on building electric and digital infrastructures.



Support with clips



Fixing clips

Innovative docking system for multiple installations.

If needs you can remove the clips and install the support with the screw.

Perfect alignment due to a self-supporting hooking system. High resistance due to special material.



RW4001 RG4001	مفتاح مفرد أبيض مفتاح مفرد أسود	 
RW4003 RG4003	مفتاح مفرد دركسيون أبيض مفتاح مفرد دركسيون أسود	 
RW4005 RG4005	كيسة جرس أبيض كيسة جرس أسود	 
RW4005L RG4005L	كيسة جرس مع لمبة أبيض كيسة جرس مع لمبة أسود	 
RW4001LP RG4001LP	مفتاح بوبلر أبيض مفتاح بوبلر أسود	 
RW4004 RG4004	مفتاح مفرد مصلب أبيض مفتاح مفرد مصلب أسود	 
RW4027 RG4027	مفتاح أياجور أبيض مفتاح أياجور أسود	 
RW4037 RG4073	مفتاح أياجور زنتراك أبيض مفتاح أياجور زنتراك أسود	 
RW4003M2 RG4003M2	مفتاح مفرد عريض أبيض مفتاح مفرد عريض أسود	 
RW4033 RG4033	مفتاح مع حمل أبيض مفتاح مع حمل أسود	 
RW4287C7 RG4287C7	ايريز USB أبيض ايريز USB أسود	 
RW4411 RG4411	مفتاح ديبر أبيض مفتاح ديبر أسود	 
RW4139 RG4139	ايريز يونيفيرسال أبيض ايريز يونيفيرسال أسود	 
RW4141 RG4141	ايريز الماني أبيض ايريز الماني أسود	 

RW4125 RG4125	ايريز عادي أبيض ايريز عادي أسود	 
RW4180 RG4180	ايريز بوز أبيض ايريز بوز أسود	 
RW4202F RG4202F	ايريز ستلايت أبيض ايريز ستلايت أسود	 
RW4258RJ11 RG4258RJ11	ايريز تلفون أبيض ايريز تلفون أسود	 
RW4279C6 RG4279C6	ايريز كمبيوتر أبيض ايريز كمبيوتر أسود	 
RW4351V230 RG4351V230	جرس أبيض جرس أسود	 
RW4950 RG4950	تسكيرة أبيض تسكيرة أسود	 
R4702	جسر مربع	
R4703	جسر ثلاثي	
R4704	جسر رباعي	
R4707	جسر سباعي	

CIRCUIT BREAKERS



Description

German schneider 6 kg circuit breakers which are installed in the project have the ability to protect each line carrying energy or supplying appliances by choosing the correct sized circuit breaker, that will automatically disconnect in the event of a short circuit, or a cable overload.





Taj Al Safa

TAJ AL SAFA REAL ESTATE DEVELOPMENT



BONEX LIFT

Description

Bonex Lifts Elevator Company is the world's leading elevator producer, installer, and maintenance. Bonex full package customized elevators increase building safety and value. Elevators meet strict quality standards. wormed reduction gearless combined with three-phase AC-single Motor Speed. Imported from Italy with a capacity of 3.6 kW.

- Max Load: 480 kg
- Capacity: 6 persons

02

MECHANICAL

Abdoun Al Shamali Project



MECHANICAL SYSTEMS

The following mechanical systems are included in the project:

1ST SERVICE

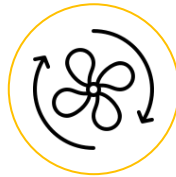
Drainage systems



Drainage systems installed in accordance with local construction requirements by a certified professional.

2nd SERVICE

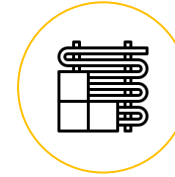
Ventilation



Use ducts and fans to circulate fresh air rather than depending on airflow through small holes or cracks.

3rd SERVICE

Heating



Underfloor heating is a method of heating a property by embedding strong and flexible tubing in the floor.

MECHANICAL SYSTEMS

The following mechanical systems are included in the project:

4th SERVICE

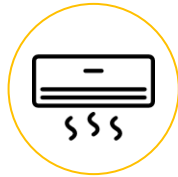
CENTRAL GAS



A central gas system that serves heating and cooking. (Central Gas Company)

5th SERVICE

AC



Ducted Air system for Guest room, Living room & kitchen.

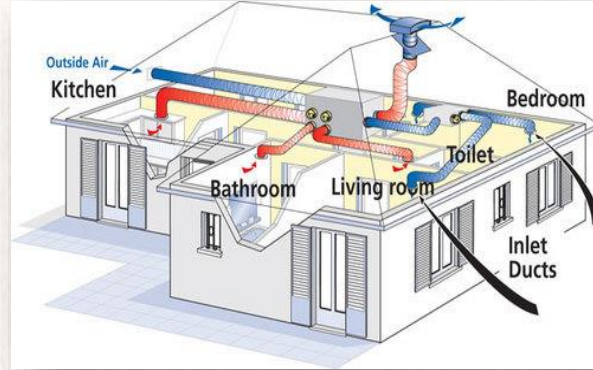
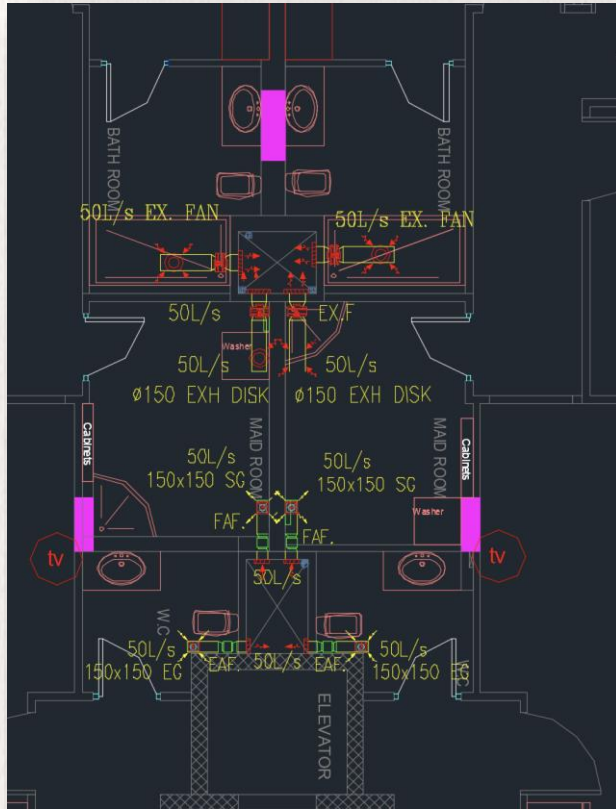
6th SERVICE

Water



4000 L water with a pump.

2) VENTILATION SYSTEM



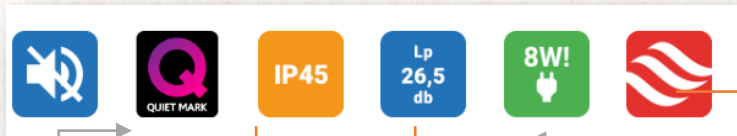
Mechanical ventilation enhances interior air quality by supplying fresh air and reducing pollutants, regulates moisture, avoids insufficient air movement, and eliminates the need for occupants to open windows.



BATHROOM EXTRACT FANS SILENT-100 DESIGN 3C Series

TajAlSafa

- A collection of axial hoods with airflow rates of approximately 85 m³/h for attachment to 100 mm-diameter round ducts.
- A flexible silent block system supports the motor, absorbing vibrations and enabling deficient noise levels.
- All fans are made of injection-molded plastic, have an automated shutter, a single-phase, 230V, 50Hz, Class B motor with thermal overload protection, and all these features.
- Each fan has Class II insulation, is IP45 rated, and can withstand air temperatures up to 40°C.



Quiet Mode

Water Protected

Low Noise

Energy Efficient

Available in Augmented Reality



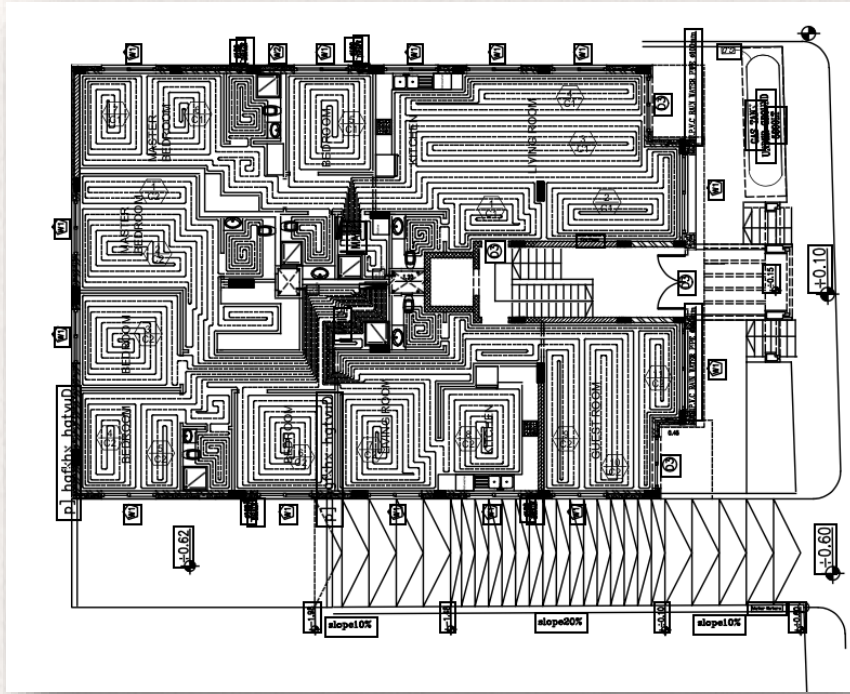
BATHROOM EXTRACT FANS SILENT-200 DESIGN 3C Series

TajAlSafa

- Axial extractors with airflow rates of 175 m³/h for connection to circular ducting with a diameter of 120 mm.
- All the fans are injection-molded plastic with an automatic shutter and a single-phase 230V-50Hz class B low-consumption motor with thermal overload protection. All the fans have class II insulation, are IP45 rated, and can withstand temperatures up to 40°C.

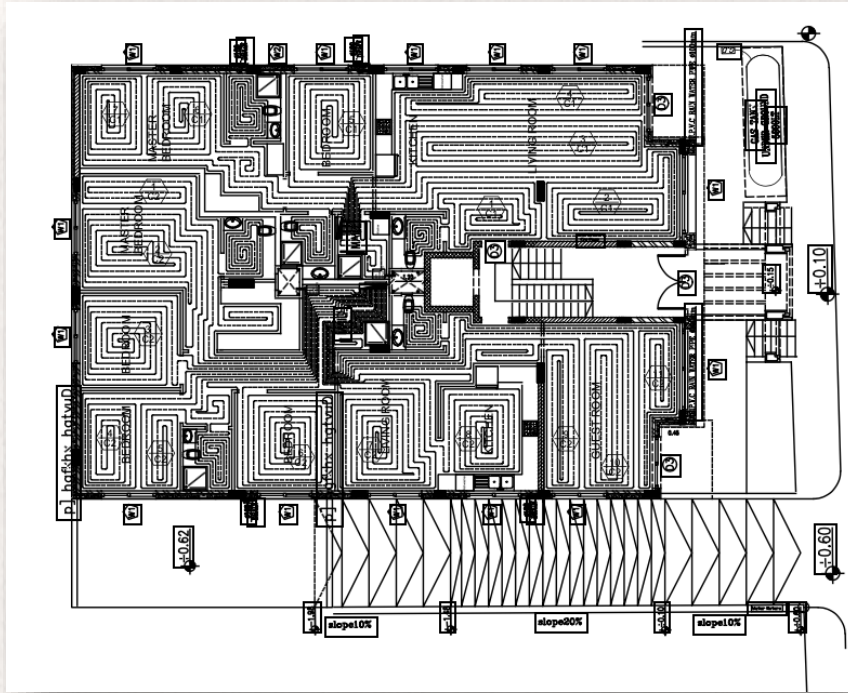


3) UNDERFLOOR HEATING



Underfloor heating is a heating system that embeds powerful and flexible tubing in the floor; heat radiated from the floor is transmitted to the walls, creating an ideal comfortable environment for that inside. It is both efficient and economical and has several advantages over radiators.

3) UNDERFLOOR HEATING



We offer a highly efficient underfloor heating system installed to the highest standards by the United Pioneering Business Company. Underfloor heating networks from the Italian emmeti system and emmeti pipes with an aluminum layer were used. Furthermore, emmeti pipes were used for the illuminator and the rest of the underfloor heating network's requirements for central lines. Heating controllers with wifi thermostat emmeti 2021-2022 were also used.

3) UNDERFLOOR HEATING

EMMETI 

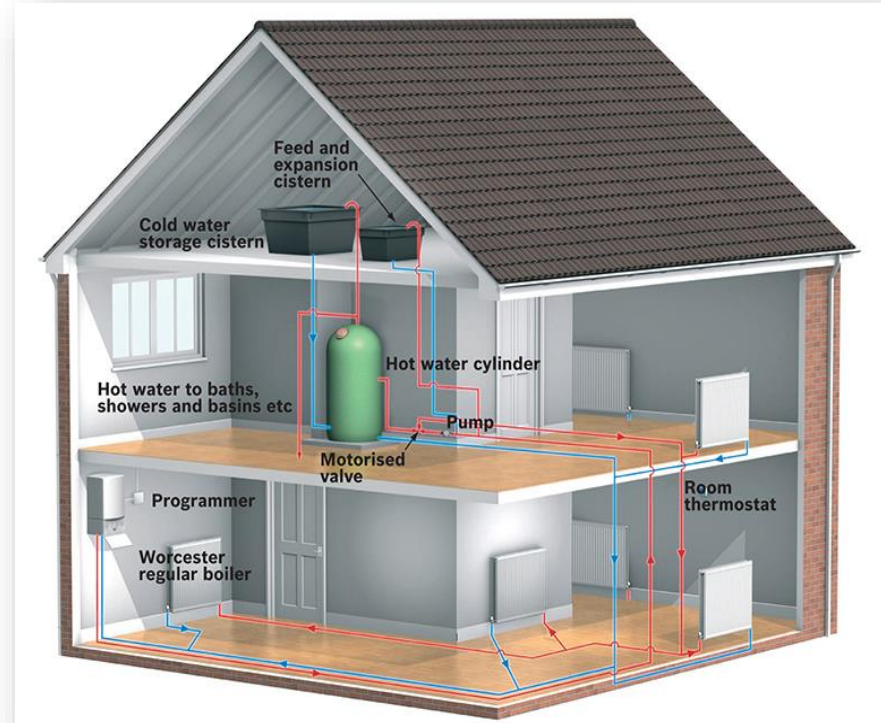
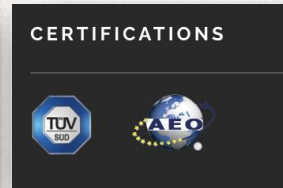
SINTESI Mini Wi-Fi

Wi-Fi-enabled electronic chronothermostat with weekly programming, installation on a flush-mounted box, and space for just two modules, intended for controlling room temperature heating (for the winter). The free app, which is accessible through Google Play and the AppStore, enables complete control and programming from your smartphone or tablet. You can report any alarm situations by sending an email to the designated address.

 works with the
Google Assistant WORKS WITH
amazon alexa Available on the
App Store GET IT ON
Google Play

4) CENTRAL GAS

- Central Gas Systems are a more convenient, safe, and secure gas delivery method.
- Ferroli gas wall boiler 24 KW was installed in the project.



5) DUCTED AIR CONDITIONING

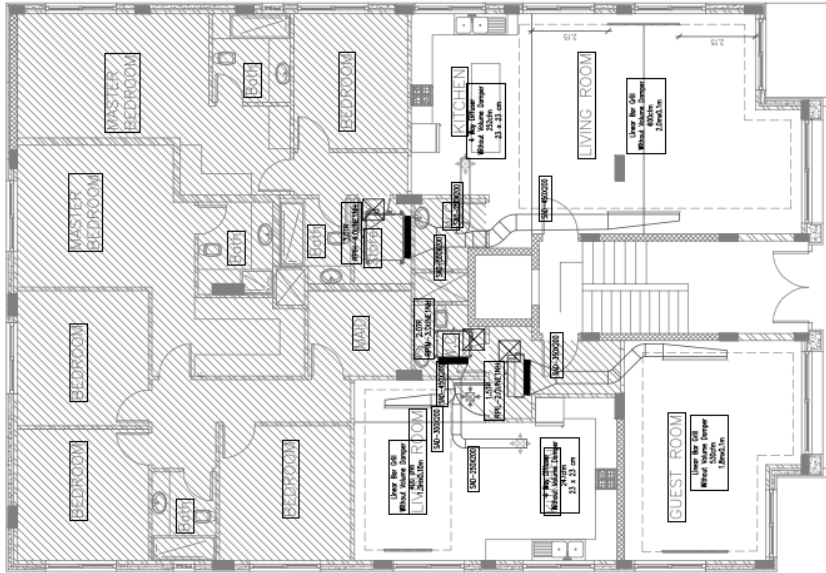
Taj Al Safa

HITACHI

Ducted Air Conditioning (Guest room, kitchen, living area).

The ducted air conditioning solutions from Hitachi for Cooling & Heating use the latest technology to enhance indoor air quality.

Our advanced systems make it simpler to keep a healthier indoor environment and intuitive climate control settings keep your home as cozy as it is energy-efficient.



WILO BOOSTER PUMP

Product advantages

- Stable water pressure due to automatic operation.
- High operational reliability and dry-running protection due to the integrated flow switch.
- Integrated thermal motor protection as standard
- Extremely low-noise operation.
- Corrosion protection through coated pump hydraulic

Motor data

Mains connection	1~230 V, 50 Hz
Voltage tolerance	±10 %
Rated power P_2	0.2 kW
Rated current I_N	1.51 A
Rated speed n	2900 1/min
Insulation class	F
Protection class	IPX4

wilo



Thanks!



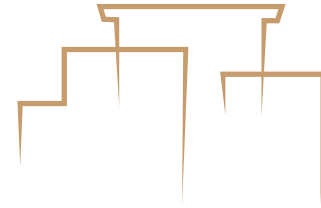
Get in touch with our marketing team for more information or to book a viewing tour.

00962795520443

00962799263003

<http://www.taj-alsafa.com/>

Taj_alsafa@yahoo.com



TAJ ALSAFA

REAL ESTATE DEVELOPMENT
