



TAJ ALSAFA
REAL ESTATE DEVELOPMENT

SWEIFIH PROJECT

TAJ AL SAFA REAL ESTATE
DEVELOPMENT



Table of Contents

INTRODUCTION

01

EXTERIOR

02

FLOORPLANS

03

INTERIOR DESIGN

04

MATERIALS

05



A Jordanian company specializing
in the construction of residential
buildings and the provision of
apartments to provide comfort
for residents and meet their needs.

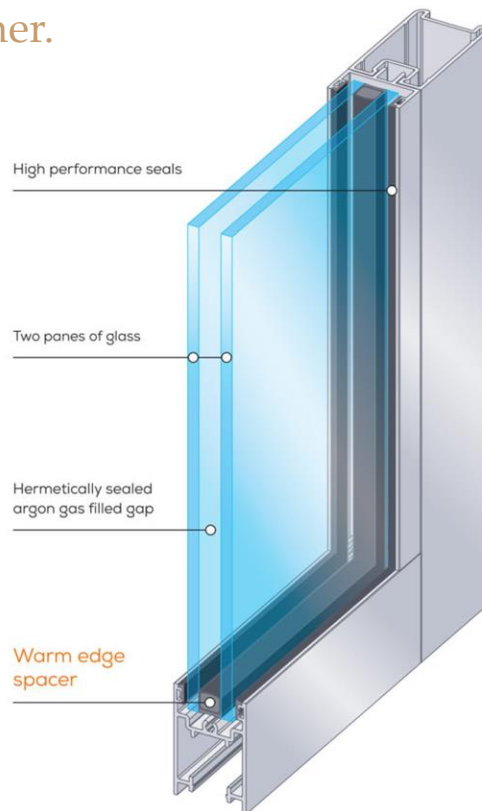
INTRODUCTION

Taj Al-Safa Housing and Real Estate Company's residential project is situated on a considerable area of (819) SQM in the Sweifieh area at a Significant location. The building has a distinctive exterior design and contains a group of luxurious apartments with neo-classic designs that provide the highest standards of comfort, health, safety, and well-being.



DOUBLE GLAZED WINDOWS

Double-glazed windows provide the extra benefit of lowering noise and having good energy efficiency. The air space between the two panels is completely sealed, adding another layer of insulation. Less heat is transferred because of the higher thermal resistance throughout the winter; heat escapes from your home, keeping it warmer.



ALUMINUM WINDOW FRAME

The project included the installation of specially designed aluminum frames that differed from the rest of the aluminum sections by having the following characteristic features:

- Italian LAVAL Window lock
- Double Zipper Stainless Wheel Fiberglass window screen.
- 6 mm clear glass+ void 14 mm + clear double silicone.
- AGC- Obeikan glass.



WINDOW SHUTTERS

Calm motor, 30 and 40 Newton, with a warranty of 5 years, replacement.

Use of acid-free silicone.

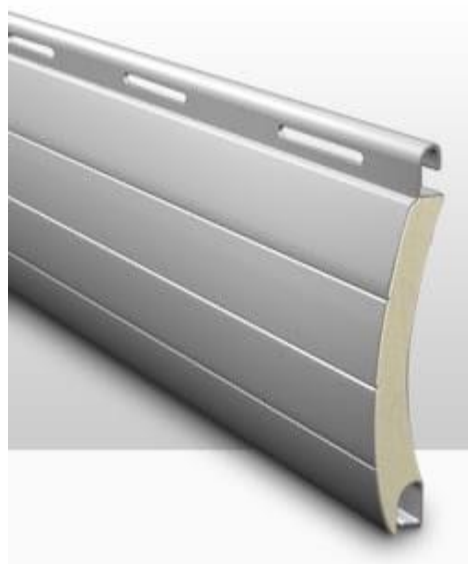
All silicone works are to the highest specifications in the application

(waterproofing + special silicone blade).

Higher-density sedra foam which gives it a higher insulation value and more durability

The glass is perforated and contains silica gel granules to Absorb moisture.

The column of the shutter is iron, about 6 cm thick, with the thickness of 0.5 mm.



EXTERIOR

TAJ AL SAFA REAL ESTATE DEVELOPMENT



EXTERIOR

TAJ AL SAFA REAL ESTATE DEVELOPMENT



ENTRANCE

TAJ AL SAFA REAL ESTATE DEVELOPMENT



ENTRANCE

TAJ AL SAFA REAL ESTATE DEVELOPMENT



ENTRANCE

TAJ AL SAFA REAL ESTATE DEVELOPMENT



ENTRANCE

TAJ AL SAFA REAL ESTATE DEVELOPMENT



ENTRANCE

TAJ AL SAFA REAL ESTATE DEVELOPMENT



ENTRANCE

TAJ AL SAFA REAL ESTATE DEVELOPMENT



ENTRANCE

TAJ AL SAFA REAL ESTATE DEVELOPMENT



ENTRANCE

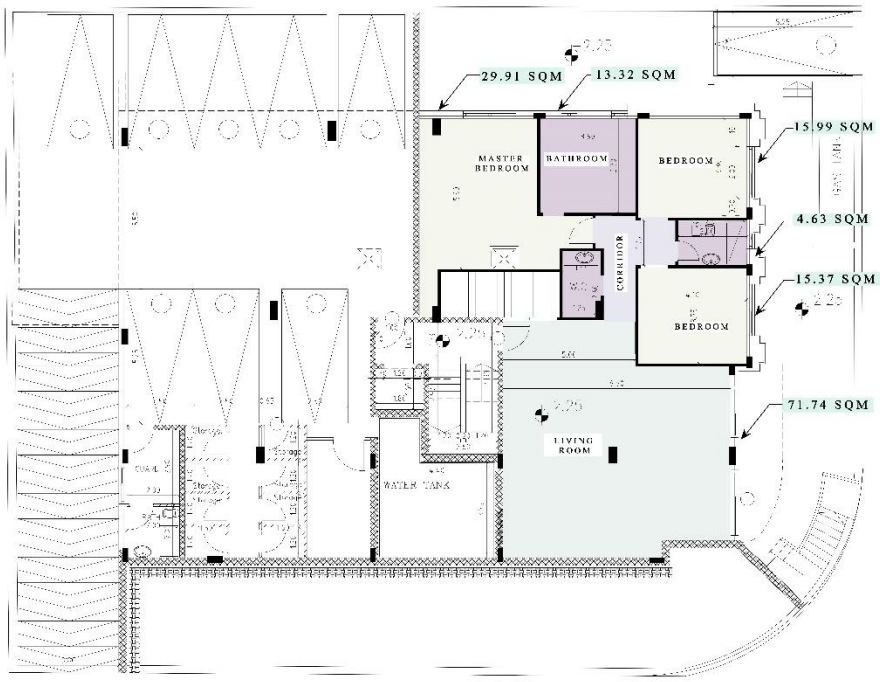
TAJ AL SAFA REAL ESTATE DEVELOPMENT



FLOOR PLANS

SWEIFIEH PROJECT

- ZONED AREA**
- BEDROOMS (1 MASTER)**
- LIVING ROOM**
- STAIRCASE**
- (3) BATHROOMS**



LEGEND

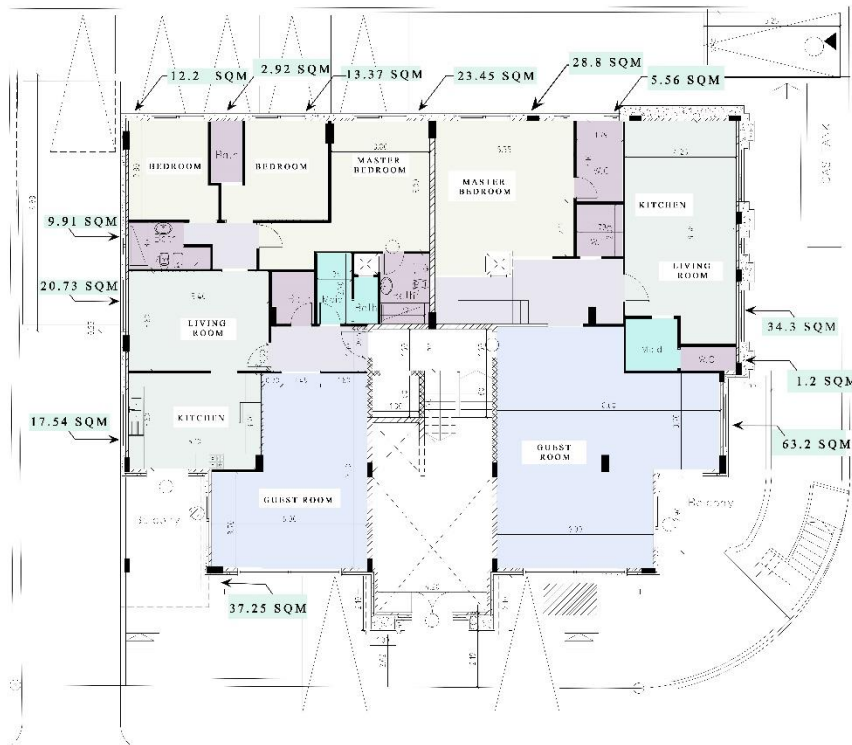
- BEDROOMS
- FAMILY ZONE
- BATHROOM
- CORRIDOR
- GUEST ROOM

FLOOR PLANS

GROUND FLOOR PLAN

SWEIFIEH PROJECT

- _____ ZONED AREA
- _____ GUEST ROOM
- _____ LIVING ROOM
- _____ KITCHEN
- _____ BEDROOMS (1 MASTER)
- _____ BATHROOMS
- _____ MAIDS ROOM WITH BATHROOM



LEGEND

- BEDROOMS
- FAMILY ZONE
- BATHROOM
- CORRIDOR
- GUEST ROOM

FLOOR PLANS

FIRST FLOOR PLAN

SWEIFIH PROJECT

- ZONED AREA
- GUEST ROOM
- LIVING ROOM
- KITCHEN
- BEDROOMS (1 MASTER)
- BATHROOMS
- MAIDS ROOM WITH BATHROOM



LEGEND

- BEDROOMS
- FAMILY ZONE
- BATHROOM
- CORRIDOR
- GUEST ROOM

FLOOR PLANS

SECOND FLOOR PLAN

LEFT APARTMENT

SWEIFIEH PROJECT

- ZONED AREA
- GUEST ROOM
- LIVING ROOM
- KITCHEN
- BEDROOMS (1 MASTER)
- BATHROOMS
- MAIDS ROOM WITH BATHROOM

RIGHT APARTMENT

SWEIFIEH PROJECT

- ZONED AREA
- GUEST ROOM
- LIVING ROOM
- KITCHEN
- 2 MASTER BEDROOMS
- BATHROOMS
- MAIDS ROOM WITH BATHROOM



LEGEND

- BEDROOMS
- FAMILY ZONE
- BATHROOM
- CORRIDOR
- GUEST ROOM

FLOOR PLANS

THIRD FLOOR PLAN

SWEIFIEH PROJECT

- ZONED AREA
- GUEST ROOM
- LIVING ROOM
- KITCHEN
- BEDROOMS (1 MASTER)
- BATHROOMS
- MAIDS ROOM WITH BATHROOM



LEGEND

BEDROOMS ■ FAMILY ZONE ■ BATHROOM ■ CORRIDOR ■ GUEST ROOM

FLOOR PLANS

ROOF FLOOR PLAN

SWEIFIEH PROJECT

ZONED AREA

GUEST ROOM

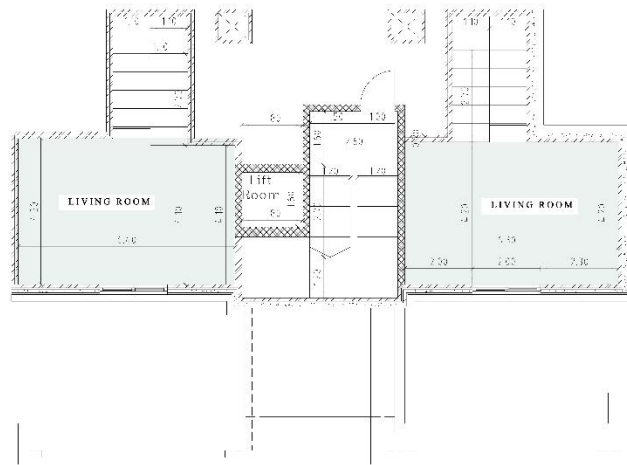
LIVING ROOM

KITCHEN

BEDROOMS
(1 MASTER)

BATHROOMS

MAIDS ROOM
WITH BATHROOM



LEGEND

■ BEDROOMS ■ FAMILY ZONE ■ BATHROOM ■ CORRIDOR ■ GUEST ROOM

PROJECT SPECIFICATIONS

External wall insulation is employed in this project; it is a composite cladding system made of suitable insulation and waterproof coating; it is a vital construction energy-saving technology that minimizes heat gain/loss via the building envelope.



PARKING

TAJ AL SAFA REAL ESTATE DEVELOPMENT



TajAlSafa

LANDSCAPE

TAJ AL SAFA REAL ESTATE DEVELOPMENT

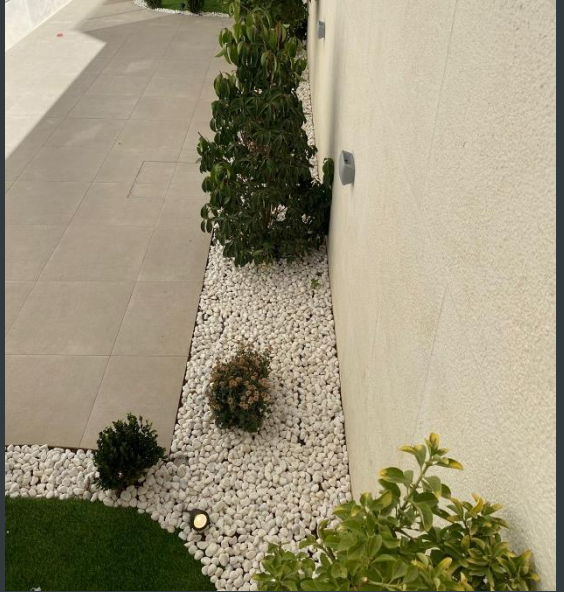
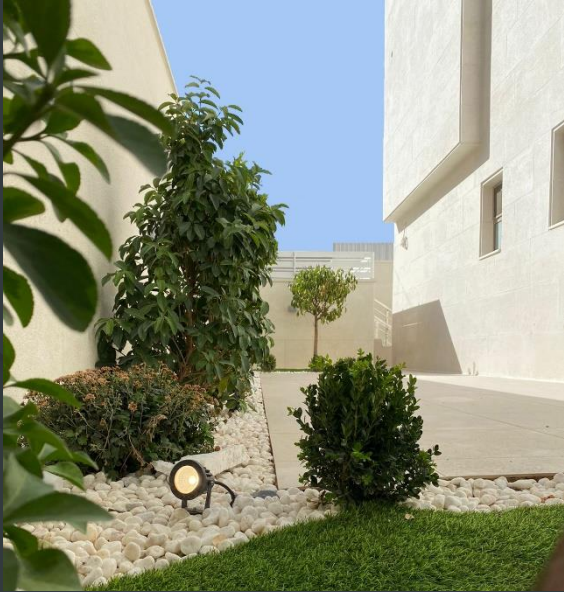


LANDSCAPE

TAJ AL SAFA REAL ESTATE DEVELOPMENT



TAJ AL SAFA REAL ESTATE DEVELOPMENT



INTERIOR DESIGN CONTENT



FLOOR PLANS



CEILING PLANS



INTERIOR 3D



MATERIAL

SWEIFIEH PROJECT

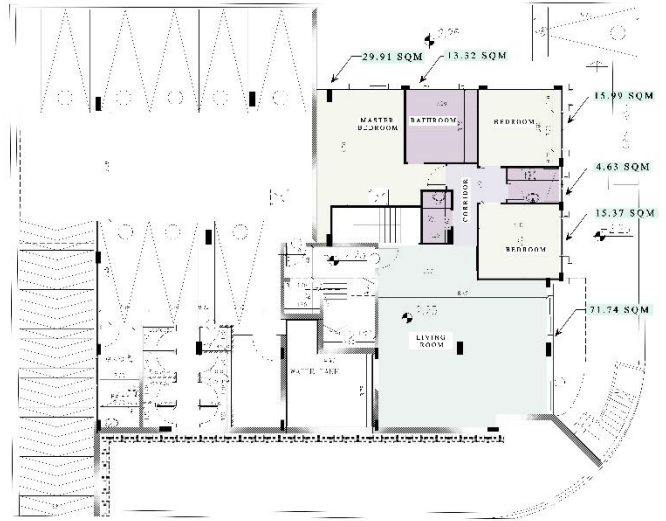
HIGH-END DUPLEX

BASEMENT & GROUND FLOOR

FLOOR

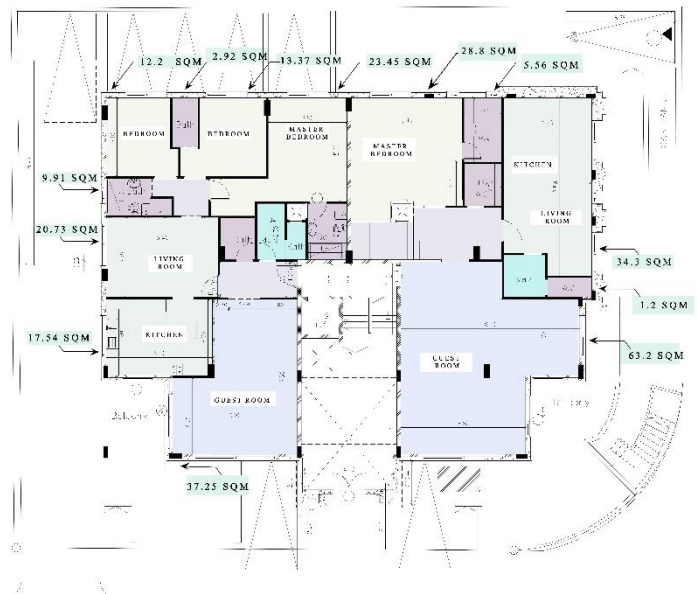


ELEVATION



BASEMENT FLOOR PLAN

BASEMENT & GROUND FLOOR
(RIGHT APARTMENT)
4 BEDROOMS
(2 MASTER BEDROOMS)
AREA:400 SQM



GROUND FLOOR PLAN

SWEIFIEH PROJECT

HIGH-END DUPLEX

3 BEDROOMS

AREA: 200 SQM



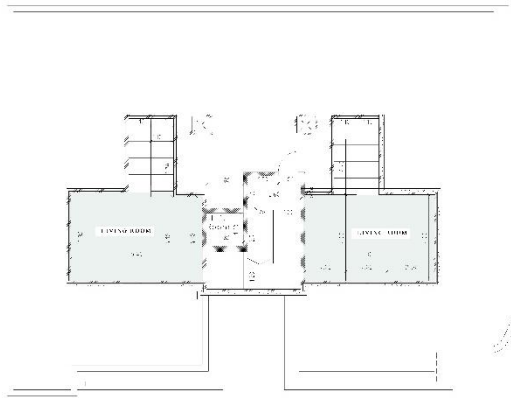
ELEVATION



FLOOR PLAN

SWEIFIEH PROJECT

HIGH-END DUPLEX THIRD FLOOR & ROOF

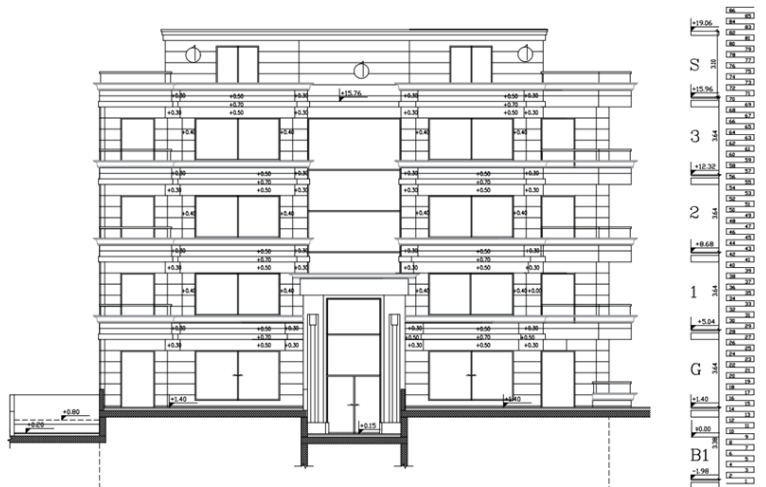


ROOF FLOOR PLAN



THIRD FLOOR PLAN

THIRD FLOOR & ROOF
3 BEDROOMS
(1 MASTER)
AREA:250 SQM



ELEVATION

INTERNAL SPACES



01 Guest Room

COLORS: ● ● ● ●



02 Dining Area

COLORS: ● ● ● ●



03 Living room

COLORS : ● ● ● ●



04 Kitchen

COLORS: ● ● ● ●

INTERNAL SPACES



05 Master Bedroom

COLORS: ● ● ● ●



06 Bedroom (1)

COLORS: ● ● ● ●



07 Bedroom (2)

COLORS: ● ● ● ●



08 Guest Bathroom

COLORS: ● ● ● ●

INTERNAL SPACES



09 Shared Bathroom

COLORS: ● ● ● ●



10 Master Bathroom

COLORS: ● ● ● ●



11 Corridor

COLORS: ● ● ● ●



12 Maids Bedroom

COLORS: ● ● ● ●

GUEST ROOM

TAJ AL SAFA REAL ESTATE DEVELOPMENT



DINING AREA

TAJ AL SAFA REAL ESTATE DEVELOPMENT



GUEST ROOM

T A J A L S A F A R E A L E S T A T E D E V E L O P M E N T



FRAPACINO MARBLE



LOCATION: GUEST ROOM

FINISH: MARBLE

SURFACE: GLOSSY

Origin: ITALY

SIZE: 120 X 60 CM

EXTERNAL DOOR

T A J A L S A F A R E A L E S T A T E D E V E L O P M E N T



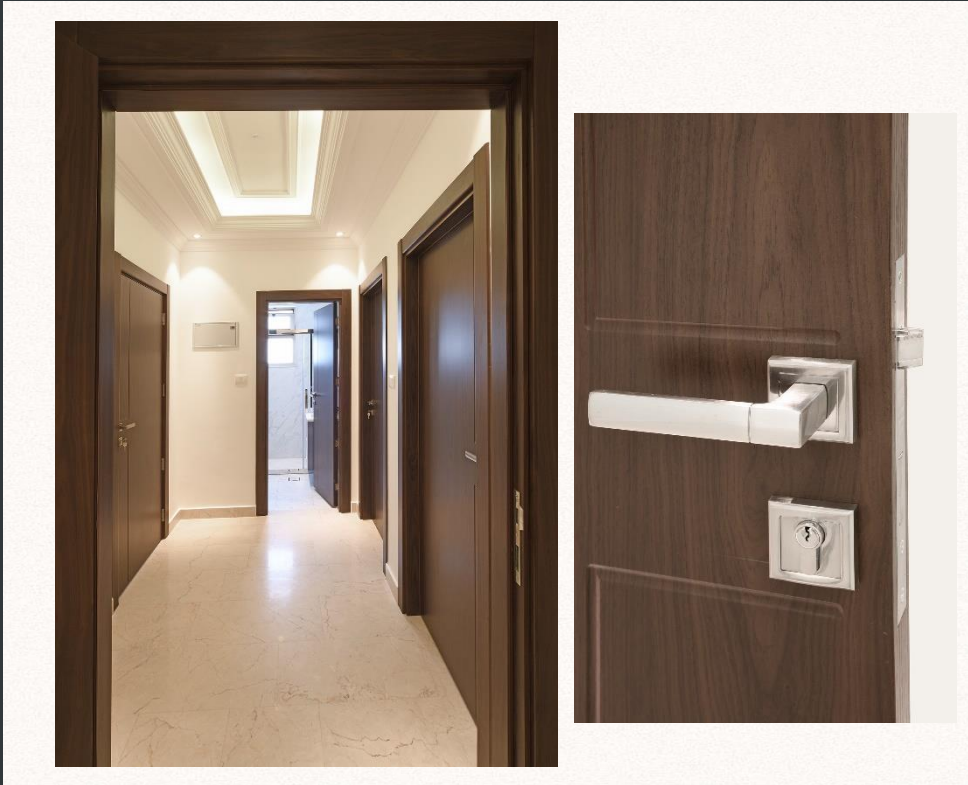
5/5



Description: A high-quality door with a wood veneer design. It provides thermal and sound insulation.

Security system: HOK door lock (Seven security locks).
High-quality magic eye.

INTERNAL DOOR



Description: The internal doors used in the project are soundproof and resistant to heat, humidity, and wetness. They are full HDF coated with a layer of German PVC, which protects the door and gives it a beautiful color and shape.

LIVING ROOM & KITCHEN

TAJ AL SAFA REAL ESTATE DEVELOPMENT



KITCHEN

cifre
cerámica



KLIFF SAND



5/5

Datos técnicos



LOCATION: KITCHEN

SERIES: KLIFF

MATERIAL: PORCELAIN

SIZE: 30 X 90 cm

CODE: 8435311526260

TILE FINISH: GLOSS

KITCHEN



cifre
cerámica



KLIFF LOOK SAND



5/5

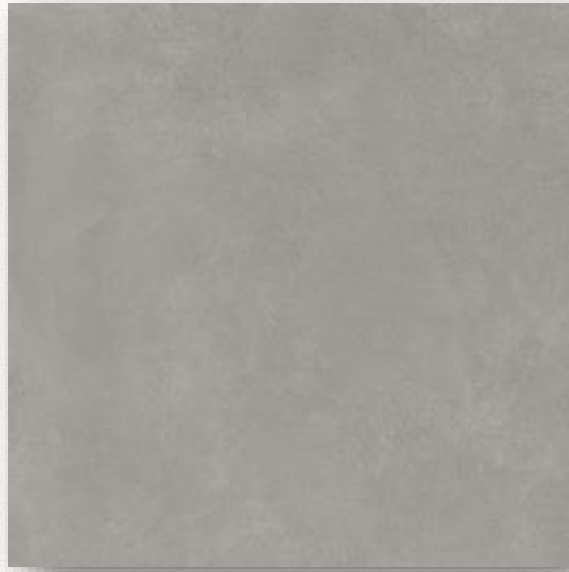
LOCATION: KITCHEN

MATERIAL: PORCELAIN

SIZE: 90x30 cm

CODE: 8435311512829

KITCHEN



TANUM CENIZA



LOCATION: KITCHEN

MATERIAL: PORCELAIN STONEWARE

SIZE: 75X 75 cm

TILE FINISH: MATE

SERIES: TANUM

MASTER BEDROOM



BEDROOMS

TAJ AL SAFA REAL ESTATE DEVELOPMENT



BEDROOMS



Helsinki Haya



Description:

Rectified Porcelain wood effect tile.

LOCATION: BEDROOMS

MATERIAL: Porcelain

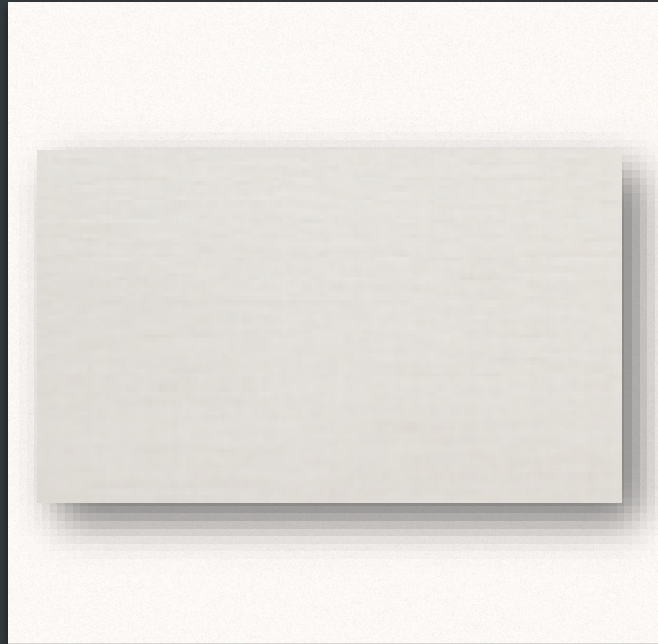
SIZE:120X20

GUEST BATHROOM

TAJ AL SAFA REAL ESTATE DEVELOPMENT



GUEST BATHROOM



TOULOUS WHITE



5/5

LOCATION: GUEST BATHROOM

MATERIAL: PORCELAIN STONEWARE

SIZE: 120 X 60 cm

CODE:ARG1012L90CH10010

COLLECTION: TOULOUS

TILE FINISH: NATURAL & GLOSSY

GUEST BATHROOM



FIBRA GREY



5/5

LOCATION: GUEST BATHROOM

MATERIAL: PORCELAIN STONEWARE

SIZE: 151 X 75 cm

TILE FINISH: NATURAL & GLOSSY



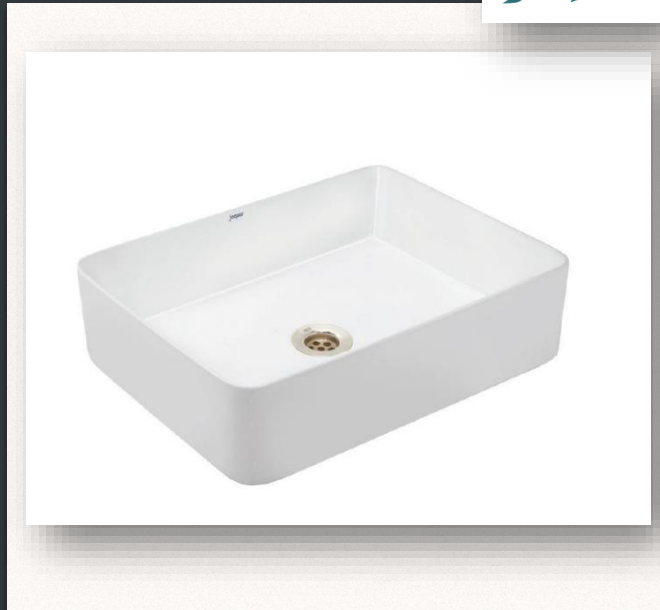
Rimless, Blind Installation
Wall Hung WC - White



Description:

Single Lever Bidet Mixer with Popup Waste & 375mm Long Braided Hoses.

LOCATION: GUEST BATHROOM
CODE: KUS-WHT-35953BIUF5M
BRAND: JAQUAR
RANGE: KUBIX
DIMENSIONS: 360X 500 X 330



Thin Rim Table Top Basin



Description:

Thin Rim Table Top Basin

LOCATION: GUEST BATHROOM

CODE: JDS-WHT-25907N

BRAND: JAQUAR

RANGE: JDR

DIMENSIONS: 530x420x140 mm

SHAPE: RECTANGULAR



Single Lever High Neck Basin Mixer



5/5

Description:

Thin Rim Table Top Basin

LOCATION: GUEST BATHROOM

CODE: JDS-WHT-25907N

BRAND: JAQUAR

RANGE: JDR

DIMENSIONS: 530x420x140 mm

SHAPE: RECTANGULAR



Hand Shower (Health Faucet)



Description:

Hand Shower (Health Faucet) with 8mm Dia 1.2 Meter Long Flexible Tube and Wall Hook.

RANGE: ALLIED

CODE: ALD-CHR-573

BRAND: JAQUAR

FINISH: CHROME

SHARED BATHROOM

TAJ AL SAFA REAL ESTATE DEVELOPMENT



SHARED BATHROOM

TAJ AL SAFA REAL ESTATE DEVELOPMENT



ONIX PERLA



LOCATION: SHARED BATHROOM

MATERIAL: PORCELAIN STONEWARE

SIZE: 90 X 30 cm

CODE: BG0000000001671

COLLECTION: INNOVA

LOOK: MARBLE

TILE FINISH: NATURAL & GLOSSY

SHARED BATHROOM

TAJ AL SAFA REAL ESTATE DEVELOPMENT



SAHARA PUL



LOCATION: SHARED BATHROOM

MATERIAL: PORCELAIN STONEWARE

SIZE: 90 X 45 cm

CODE: BG0000000001671

COLLECTION: INNOVA

LOOK: MARBLE

TILE FINISH: NATURAL & GLOSSY



Rimless, Blind Installation Wall Hung WC



Description:

Rimless, Blind Installation Wall Hung WC With PP Soft Close Slim Seat Cover, Hinges And Accessories Set.

LOCATION: SHARED BATHROOM

CODE: SLS-WHT-6953BIPPSM

BRAND: JAQUAR

DIMENSION: 375x520x400 mm



Under Counter Basin



Description:

Under Counter Basin With Fixing Accessories.

LOCATION: SHARED BATHROOM

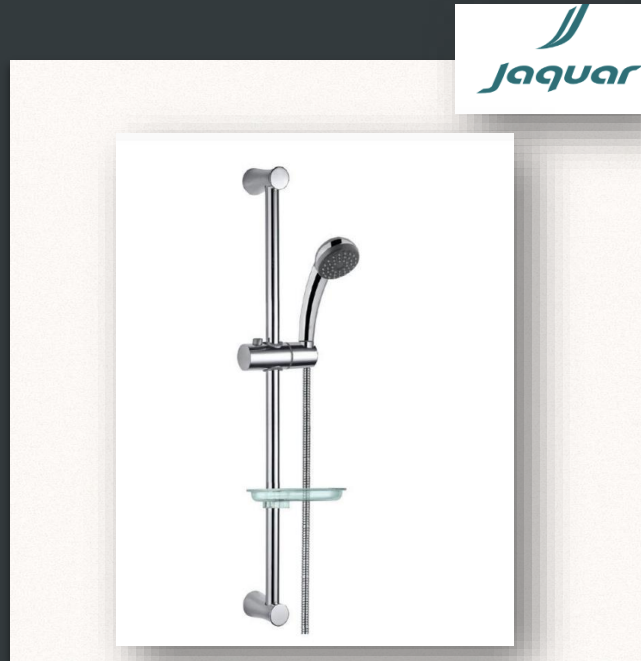
CODE: CNS-WHT-701

BRAND: JAQUAR

RANGE: CONTEINENTAL SERIES

DIMENSION: 485x370x205 mm

SHAPE: RECTANGULAR



Slide Rail



5/5

Description:

Slide Rail (19mm dia. & 600mm) with Single Function Hand Shower (EHS-551) with 1.5M Plastic Coated Shower Hose and soap dish.

LOCATION: SHARED BATHROOM

CODE: SHA-CHR-1110E

BRAND: JAQUAR

RANGE: SHOWER ACCESSORIES

FINISH: CHROME



Single Lever Bath & Shower Mixer



5/5

Description:

Single Lever Bath & Shower Mixer, Wall Mounted

LOCATION: SHARED BATHROOM

CODE: EKO-CHR-33119

BRAND: JAQUAR

RANGE: EKO

FINISH: CHROME



Single Lever Basin Mixer



Description:

Single Lever Basin Mixer without Popup Waste,
With 375mm Long Braided Hoses.

LOCATION: SHARED BATHROOM

CODE: EKO-CHR-33001B

BRAND: JAQUAR

RANGE: EKO

FINISH: CHROME



Hand Shower (Health Faucet)



Description:

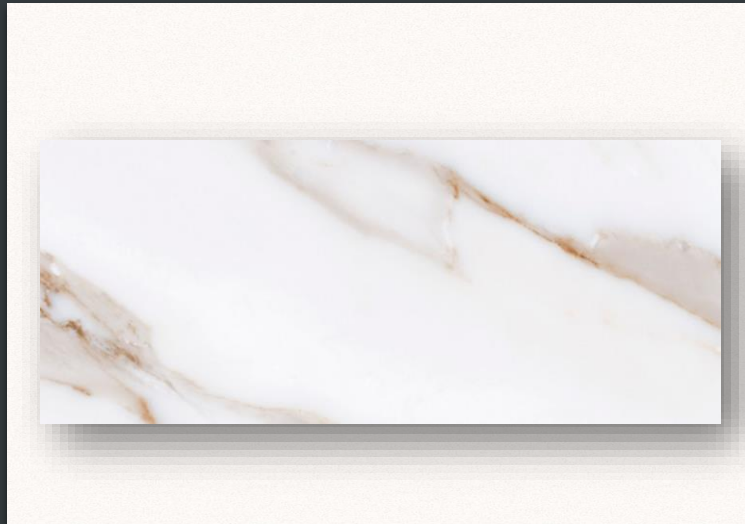
Hand Shower (Health Faucet) with 8mm Dia 1.2 Meter Long Flexible Tube and Wall Hook.

RANGE: ALLIED
CODE: ALD-CHR-573
BRAND: JAQUAR
FINISH: CHROME

MASTER BATHROOM

TAJ AL SAFA REAL ESTATE DEVELOPMENT





Calacatta Gold



LOCATION: MASTER BATHROOM

MATERIAL: GLAZED PORCELAIN

SIZE: 90 X 45 cm

BRAND: CALACATTA GOLD

CODE: GF-20512B



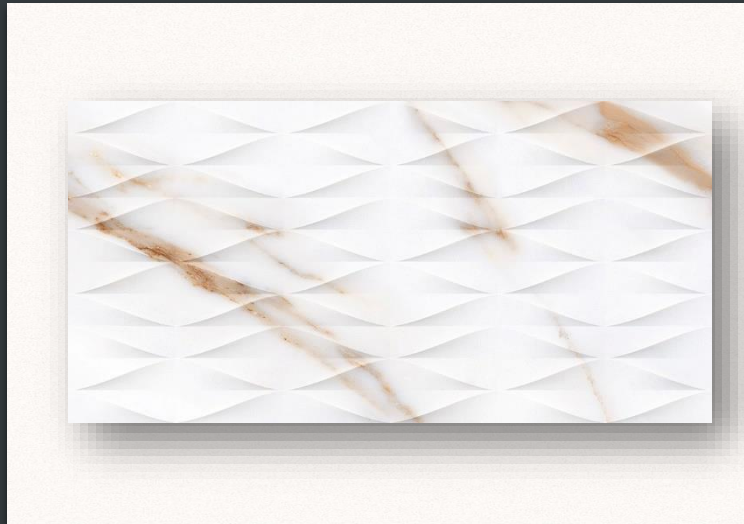
FROST-PROOF



MATTE



SLIGHT VARIATION



Calacatta Gold DÉCOR



LOCATION: MASTER BATHROOM

MATERIAL: GLAZED PORCELAIN

SIZE: 90 X 45 cm

BRAND: CALACATTA GOLD

CODE:GF-20512D



FROST-PROOF



MATTE



SLIGHT VARIATION



Rimless blind installation wall hung



Description:

Rimless blind installation wall-hung WC with UF soft close slim seat cover, hinges, accessories set.

LOCATION: MASTER BATHROOM

CODE: LAS-WHT-91953BIUF5M

BRAND: JAQUAR

RANGE: LAGUNA

DIMENSIONS: 370x525x350mm



Project Shower Panel



5/5

LOCATION: MASTER BATHROOM

CODE: JPL-SSF-ST8858B3

BRAND: JAQUAR

RANGE: SHOWER PANELS

DIMENSIONS: 1400X200 mm



Hand Shower (Health Faucet)



Description:

Hand Shower (Health Faucet) with 8mm Dia 1.2 Meter Long Flexible Tube and Wall Hook.

RANGE: ALLIED

CODE: ALD-CHR-573

BRAND: JAQUAR

FINISH: CHROME



Single Lever Basin Mixer



Description: Single Lever Basin Mixer without
PopUp Waste and 375mm Long Braided Hoses.

RANGE: Aria

CODE: ARI-CHR-39001B

BRAND: JAQUAR

FINISH: CHROME

MAIDS BEDROOM

TAJ AL SAFA REAL ESTATE DEVELOPMENT



MAIDS BATHROOM

T A J A L S A F A R E A L E S T A T E D E V E L O P M E N T





TAJ ALSAFA

REAL ESTATE DEVELOPMENT



Get in touch with our marketing team for more information or to book a viewing tour.

00962795520443

00962799263003

<http://www.taj-alsafa.com/>

Taj_alsafa@yahoo.com