



TAJ ALSAFA

REAL ESTATE DEVELOPMENT

TAJ ALSAFA
PROJECT

SHMESANI PROJECT

Electrical Systems

The following electrical systems are included in the project:

1ST SERVICE

Central gas boiler



Gas boilers are the most popular choice for heating and hot water.

2nd SERVICE

Timers Light control



Timer switch motion sensors offer timed on/off control of lights.

3rd SERVICE

Water pump



Bottom and top water pump.

Electrical Systems

The following electrical systems are included in the project:

4th SERVICE

Main internet
distribution system



Collection of online
travel portals or travel
agencies.

5th SERVICE

Central tv system



Central TV system is a
mandatory solution for
multi-room units.

6th SERVICE

Earth leakage
protection system



Shock-prevention
device used in
electrical systems with
high Earth impedance.

Electrical Systems

The following electrical systems are included in the project:

7th SERVICE

Electric shutters
control



Foam insulated electric
shutters

8th SERVICE

Gas detector



Gas detector

9th SERVICE

Intercom



Smart audio and video
intercom.

Electrical Systems

The following electrical systems are included in the project:

10th SERVICE

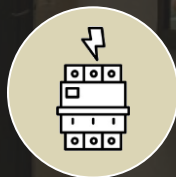
Switches



AVE Switches

11th SERVICE

Circuit Breakers



GE Breakers

12th SERVICE

Lift



Astra Lift

02

Mechanical Systems

SHMESANI PROJECT



Mechanical Systems

The following mechanical systems are included in the project:

1ST SERVICE

Drainage systems



Drainage systems are installed in accordance with local construction requirements by a certified professional.

2nd SERVICE

Central Gas



A central gas system (Unigaz) that serves heating and cooking. In addition, extra points for the fireplace and the kitchen are provided.

3rd SERVICE

Central Heating



Gas heater .

Mechanical Systems

The following mechanical systems are included in the project:

4th SERVICE

AC



Split system air conditioning system

5TH SERVICE

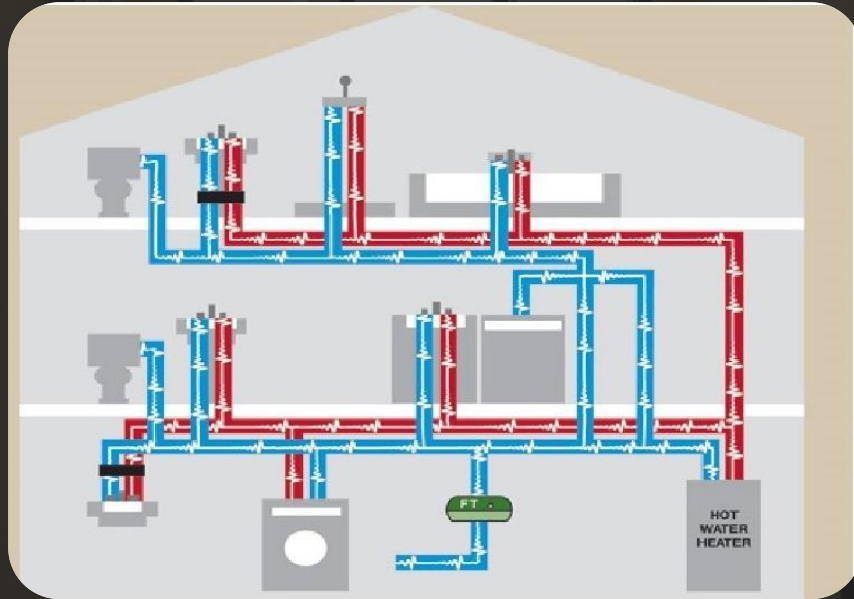
Water



Upper and lower water tanks total 4 m2 for each apartment with two Italian water pumps.

1) DRAINAGE SYSTEM

TajAlSafa



Drainage systems are designed to dispose of wastewater as quickly as feasible and keep sewage and septic tank gases from entering residential areas.

2) CENTRAL GAS

- Central Gas Systems are a more convenient, safe, and secure gas delivery method.
- Unigaz gas wall boiler 24 KW was installed in the project.



SWITCHES



The switches placed in the project are AVE switches, developed to make the accessible design by aiming for the best in terms of quality and reliability.

CAMERAS

TajAlSafa



- Triple-stream Encoding
- Smart H.265+ and Smart H.264+ Video Compression
- 5MP & 4MP Fixed Lenses
- Built-in Microphone and Built-in Speaker
- Analytics+ Functions — People Counting, Perimeter Protection, Smart Motion Detection+, and Face Detection
- Enhanced Power and Data Transmission Distances (ePoE)
- IP67 Ingress Protection
- 5-year Warranty.



5MP 5-in-1 Network Eyeball Camera.



4 MP IR WIFI 2.8 mm Mini Bullet.



4MP Night COLOR 2.0 Fusion Network Eyeball.



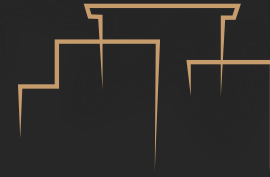
Get in touch with our marketing team for more information or to book a viewing tour.

00962795520443

00962799263003

<http://www.taj-alsafa.com/>

Taj_alsafa@yahoo.com



TAJ ALSAFA

REAL ESTATE DEVELOPMENT
