



TAJ ALSAFA
REAL ESTATE DEVELOPMENT

TAJ AL SAFA PROJECT

Tla' Al-Ali Project



INTRODUCTION

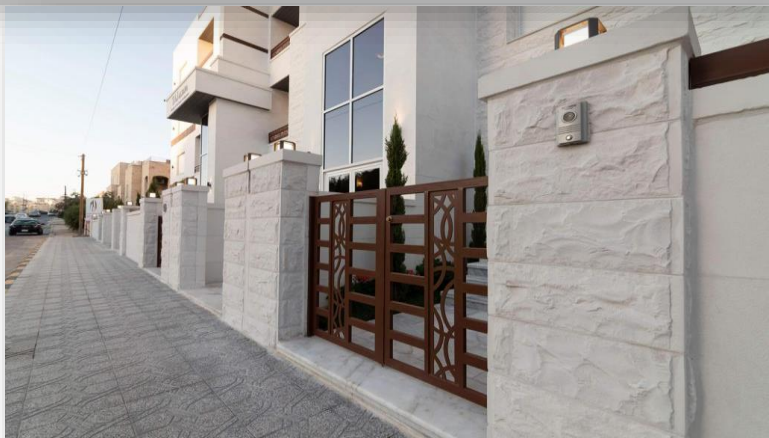
The project is located in a distinct and vital area of the Tla' Al Ali region. It includes apartments of various sizes while maintaining the privacy of each residential unit. The materials used to build this project are of the highest quality.



A Jordanian company specialized in constructing residential buildings and providing apartments to provide residents with comfort and meet their needs.

TajAlSafa

TAJ AL SAFA REAL ESTATE DEVELOPMENT



01

EXTERIOR

TIA' Al-Ali PROJECT

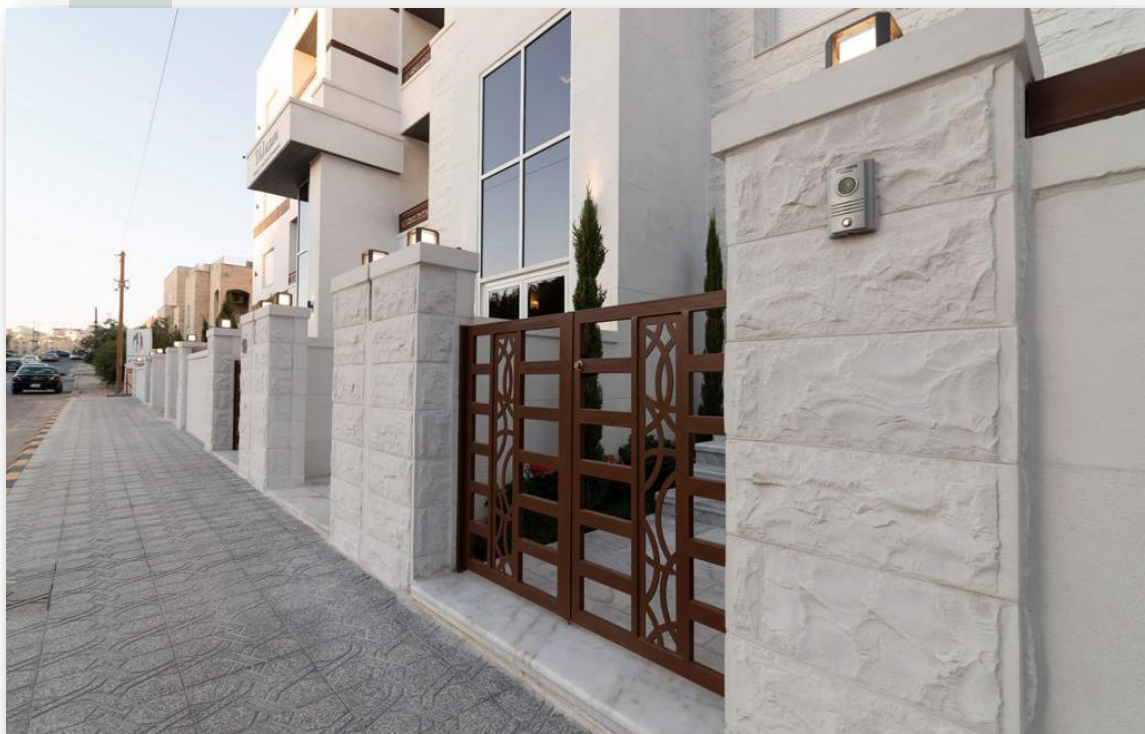
Tia' Al-Ali Project

PROJECT SPECIFICATIONS

Al-Ruwashed stone is a low water absorption rate that sets it apart. Its relative hardness distinguishes it from other types of sedimentary stone. It is also characterized by its ability to withstand winter and summer weather. In addition, The building is completely insulated with Saudi polyester and glass water.



EXTERIOR



Exterior



Exterior

EXTERIOR



Landscape design

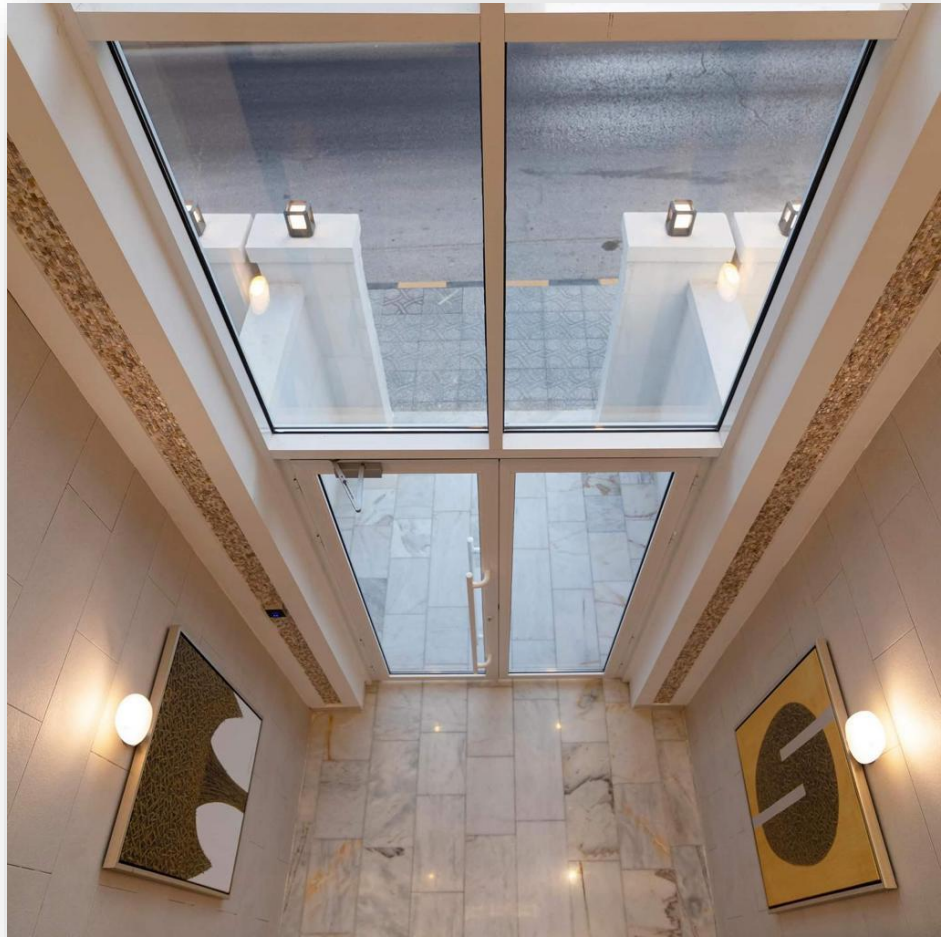


Exterior

ENTRANCE



Entrance design



Entrance details

PARKING



Parking details

- Each flat has one allocated parking space.
- Motion sensor outdoor light fixtures.
- Security systems.
- One Store for each apartment.
- High-Quality Grey Basalt tile has been used for the floors.

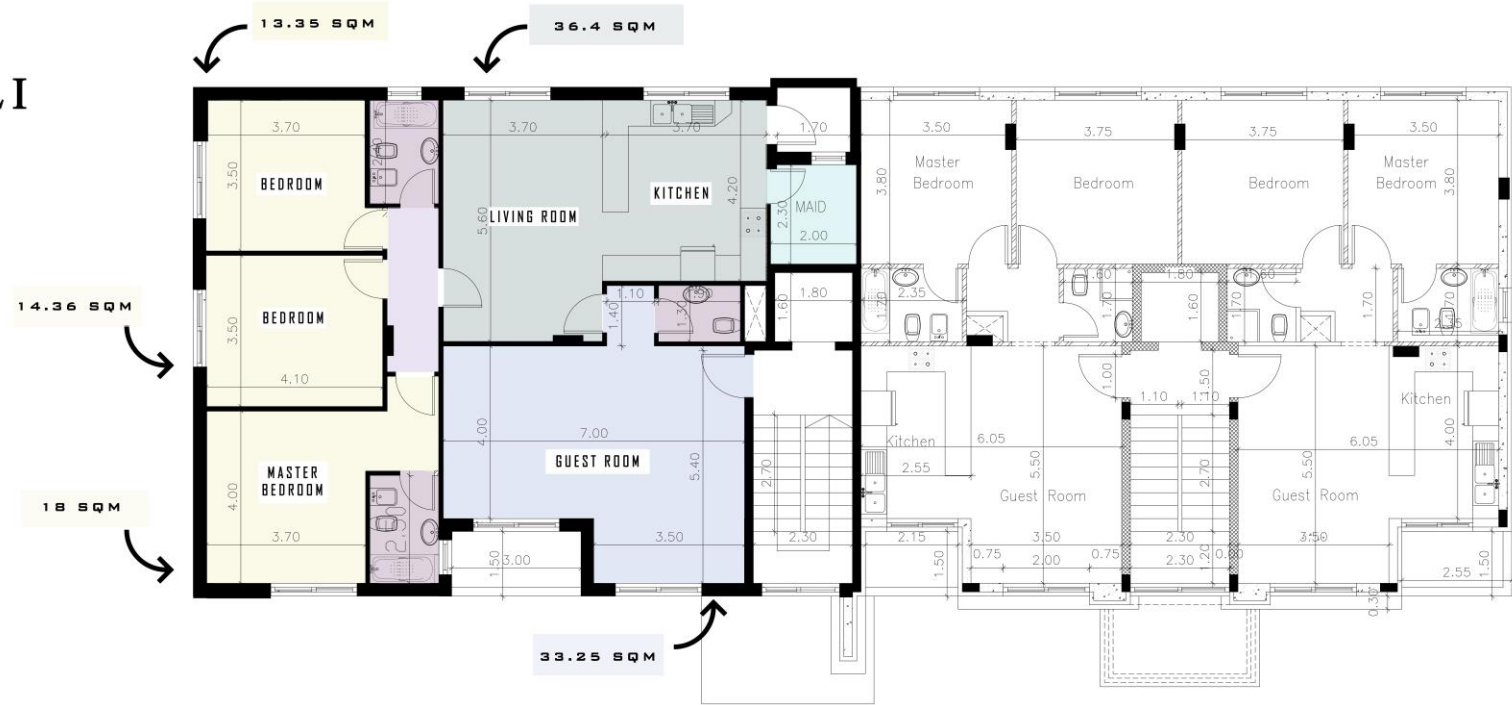
FLOOR PLANS



FIRST-SECOND REPETITIVE

TLA' AL-ALI PROJECT

- ZONED AREAS**
- ▣ 3 BEDROOMS (1 MASTER)
 - ▣ GUEST ROOM DINING ZONE
 - ▣ LIVING ROOM KITCHEN
 - ▣ MAID'S ROOM (WITH BATHROOM)
 - ▣ 3 BATHROOMS



- LEGEND**
- ▣ BEDROOMS
 - ▣ FAMILY ZONE
 - ▣ BATHROOM
 - ▣ CORRIDOR
 - ▣ GUEST ROOM

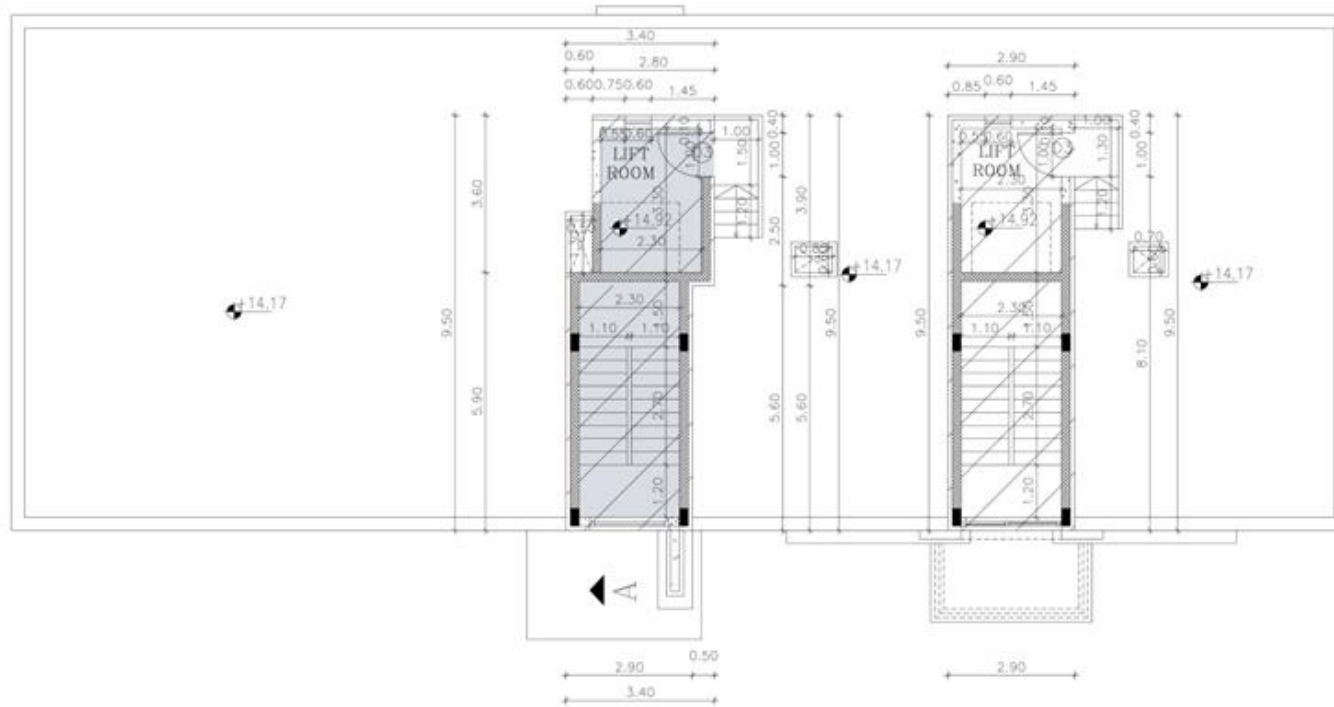
FLOOR PLANS

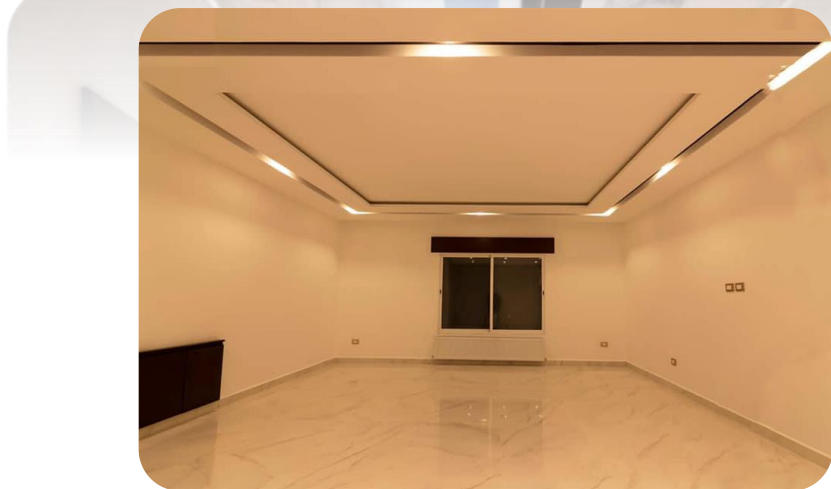
ROOF FLOOR PLAN

**TLA' AL-ALI
PROJECT
170 SQM**

ZONED AREAS

- ▣ 3 BEDROOMS
(1 MASTER)
- ▣ GUEST ROOM
DINING ZONE
- ▣ LIVING ROOM
KITCHEN





02

INTERIOR

TIA' Al-Ali PROJECT

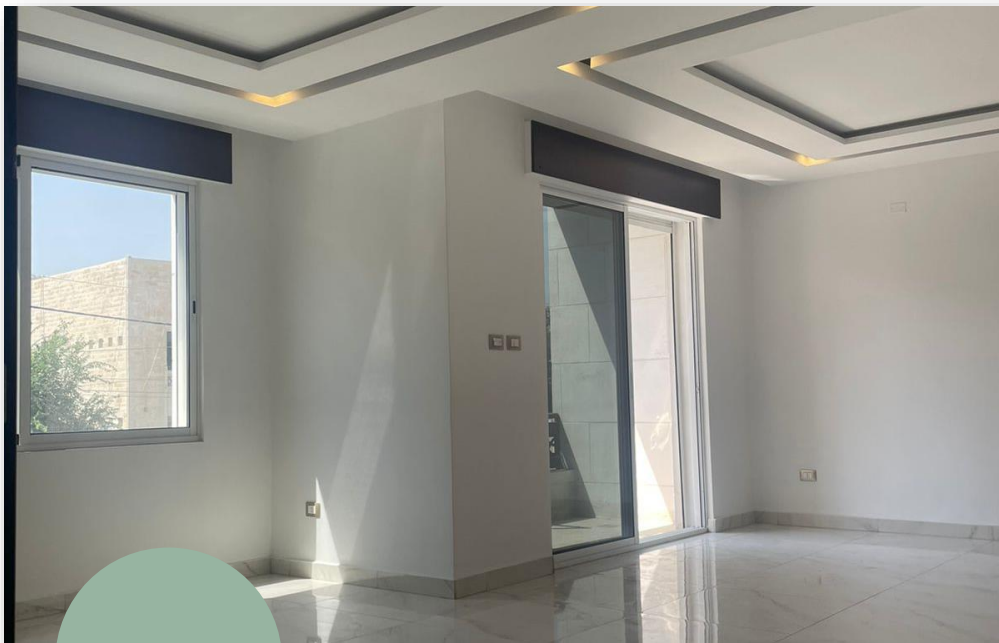
TIA' AL-ALI PROJECT

FIRST FLOOR APARTMENT 3 BEDROOMS



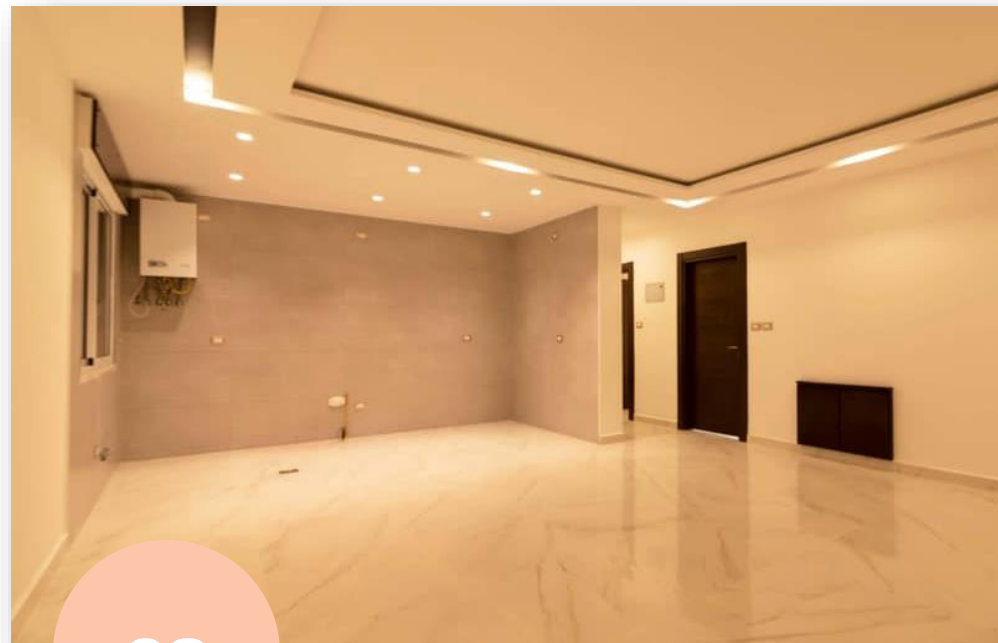
TOTAL AREA 170 SQ.M.

INTERNAL SPACES



01

GUEST ROOM



02

LIVING ROOM &
KITCHEN

INTERNAL SPACES



03

MASTER BEDROOM



04

BEDROOM (1)

INTERNAL SPACES



05

BEDROOM (2)



06

GUEST BATHROOM

INTERNAL SPACES



07

MASTER BATHROOM



08

SHARED BATHROOM

GUEST ROOM

TajAlSafa





Calacatta Bianco Porcelain (Laser Cut)



LOCATION: GUEST ROOM

FINISH: GLAZED PORCELAIN

SURFACE: GLOSSY

Origin: Spain

SIZE: 75 X 75 CM



**KALE
KILIT**



Kale External Door



Description: The Kale Dynamic series combines minimalism and elegance; a high-quality door with a wood veneer design. It provides thermal and sound insulation.

Security system: Seven security locks.

High-quality magic eye.





Internal Door



Description: Internal doors installed in the project are not affected by water, humidity, and heat and are resistant to bacteria, in addition to soundproofing. They are coated with a layer of PVC, which protects the door and gives it a beautiful color and shape.

Top-rated Turkish
Aluminum Door Handle

LIVING ROOM & KITCHEN

Taj Al Safa

TAJ AL SAFA REAL ESTATE DEVELOPMENT



Tla' Al-Ali Project



Calacatta Blanco Porcelain (Laser cut)



LOCATION: LIVING ROOM &
KITCHEN

FINISH: GLAZED PORCELAIN

SURFACE: GLOSSY

Origin: Spain

SIZE: 75 X 75 CM

MASTER BEDROOM

TajAlSafa



BEDROOM

Taj Al Safa





MARVEL TAPARKA



LOCATION: BEDROOMS
MATERIAL: PORCELAIN
SURFACE: GLOSSY
ORIGIN: SPAIN
SIZE: 61 X 61 CM

GUEST BATHROOM



Matirica sand ceramic
(Made in Spain) 75 x 25



Elpisis sand ceramic (Made
in Spain) 75 x 25



Natural sand
rik porcelain
(Made in
Spain) 75 x 25



GUEST BATHROOM

TajAlSafa



Wall-hung toilet ASAICER



LOCATION: GUEST
BATHROOM
MATERIAL: CERAMIC
COLOR: WHITE
SURFACE: GLOSSY

GUEST BATHROOM

TajAlSafa

Roca



ROCA Wall-hung washbasin



LOCATION: GUEST
BATHROOM
MATERIAL: CERAMIC
COLOR: WHITE
SURFACE: GLOSSY

GUEST BATHROOM

TajAlSafa

Roca



ROCA base unit with two drawers
and basin



LOCATION: GUEST
BATHROOM
COLOR: WHITE
SURFACE: GLOSSY

GUEST BATHROOM

TajAlSafa



UNISSET 2-in-1 Set for WC (Grohe)



LOCATION: GUEST BATHROOM

CODE: 3882500D

COLOR: CHROME

SKATE COSMOPOLITAN FLUSH PLATE,
CHROME.

Description: Electric WC flushing system that is ideal for use in bathroom furniture. It saves water and allows the user to select the amount of water used, either 6 L or 9 L. It is leak-tested, sound-insulating, simple to install, and concealed within the bathroom wall.

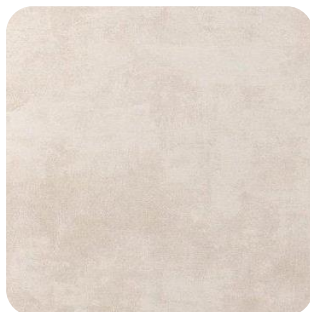
MASTER BATHROOM



Palace Marvel ceramic
(Made in Spain) 80 x 36



Palace Marvel décor ceramic
(Made in Spain) 80 x 36



Touchstone Crema
Matt Porcelain
45×45 (Made in
Spain)



MASTER BATHROOM



Ceramic washbasin hanging



LOCATION: MASTER
BATHROOM
MATERIAL: CERAMIC
COLOR: WHITE
SURFACE: GLOSSY

MASTER BATHROOM

devit



Wall-hung toilet DEVIT



LOCATION: MASTER
BATHROOM
MATERIAL: CERAMIC
MADE IN: SPAIN
COLOR: WHITE
SURFACE: GLOSSY

SHARED BATHROOM



Neutra New Pearl ceramic
(Made in Spain) 60 x 25



Neutra New Pearl ceramic
(Made in Spain) 60 x 25



Reemas porcelain matt
(Made in Spain) 45 x 45



SHARED BATHROOM

devit



Ceramic washbasin hanging
Idevit Halley



LOCATION: SHARED
BATHROOM
MATERIAL: CERAMIC
MADE IN: UKRAINE
COLOR: WHITE
SURFACE: GLOSSY

TajAlSafa

SHARED BATHROOM



Floor standing toilet DURAVIT



LOCATION: SHARED
BATHROOM
MATERIAL: CERAMIC
MADE IN: GERMANY
COLOR: WHITE

Thanks!



**Get in touch with our marketing team
for more information or to book a
viewing tour.**

00962795520443

00962799263003

<http://www.taj-alsafa.com/>

Taj_alsafa@yahoo.com



TAJ ALSAFA

REAL ESTATE DEVELOPMENT
