

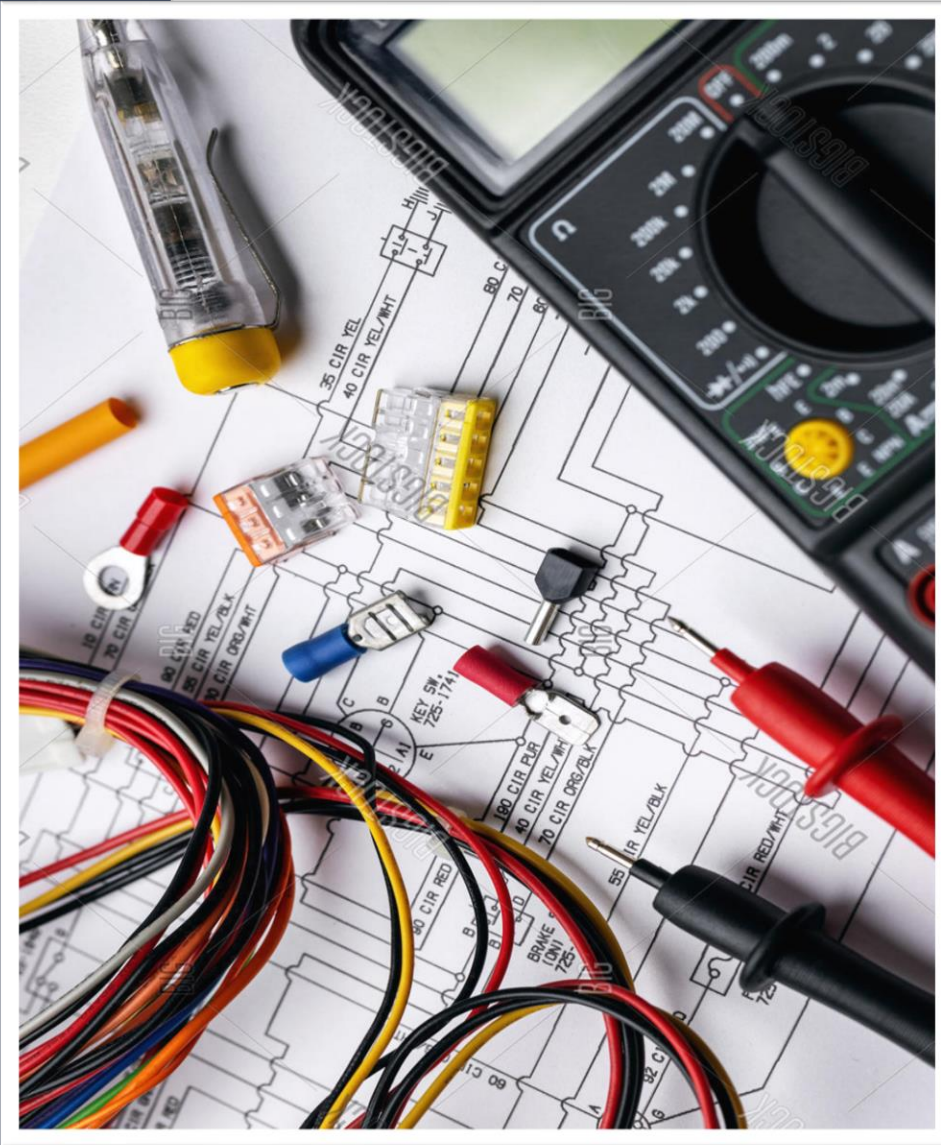



TAJ ALSAFA
REAL ESTATE DEVELOPMENT

TAJ ALSAFA

REAL ESTATE DEVELOPMENT

SWIEFIEH PROJECT



01

ELECTRICAL

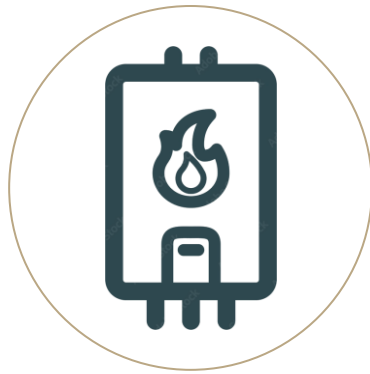
SWIEFIEH PROJECT

Electrical techniques

The following electrical systems are included in the project:

1ST SERVICE

Central gas boiler



Gas boilers are the most popular choice for heating and hot water.

2nd SERVICE

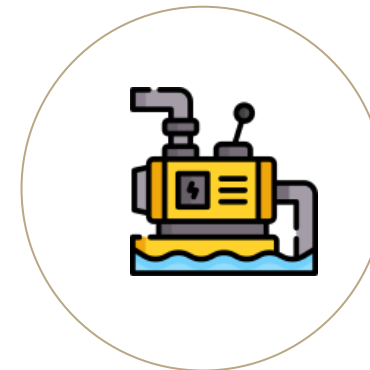
Motion detector



The motion detector is an electrical device that detects nearby motion using a sensor.

3rd SERVICE

Water pump



Bottom and top water pump.
(Pedrollo 2)

Electrical techniques

The following electrical systems are included in the project:

4th SERVICE

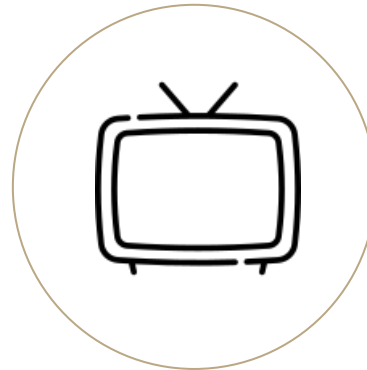
Main internet
distribution system



Collection of online travel
portals or travel agencies.

5th SERVICE

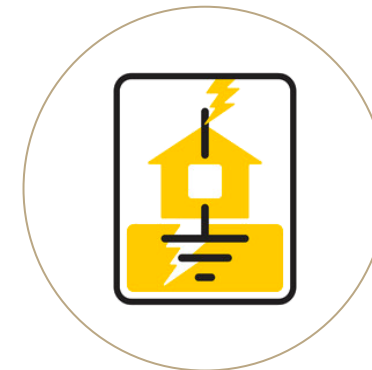
Central tv system



Central TV system is a mandatory
solution for multi-room units.

6th SERVICE

Earth leakage
protection system



Shock-prevention device used
in electrical systems with high
Earth impedance.

Electrical techniques

The following electrical systems are included in the project:

7th SERVICE

Electric shutters
control



Easy control

8th SERVICE

Anti-theft system



Home security system

9th SERVICE

Gas detector



Gas detector

Electrical techniques

The following electrical systems are included in the project:

10th SERVICE

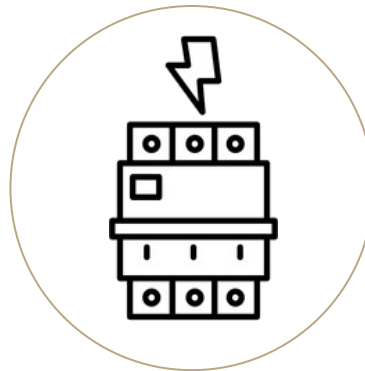
Intercom



Smart audio and video intercom
(Commax)

11th SERVICE

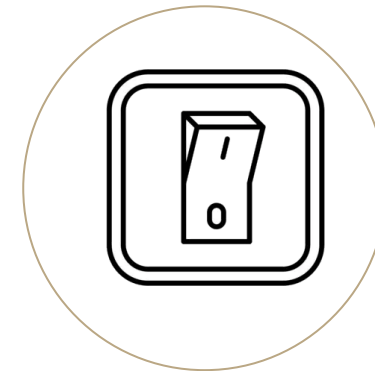
Circuit Breakers



Circuit Breakers (ABB)

12th SERVICE

Switches



Italian Bticino sockets
& Switches

Description

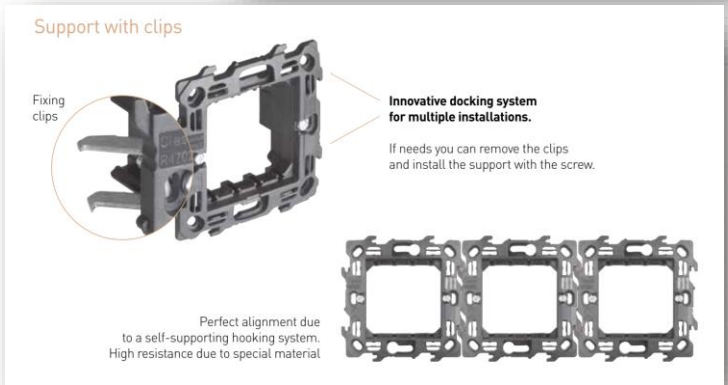
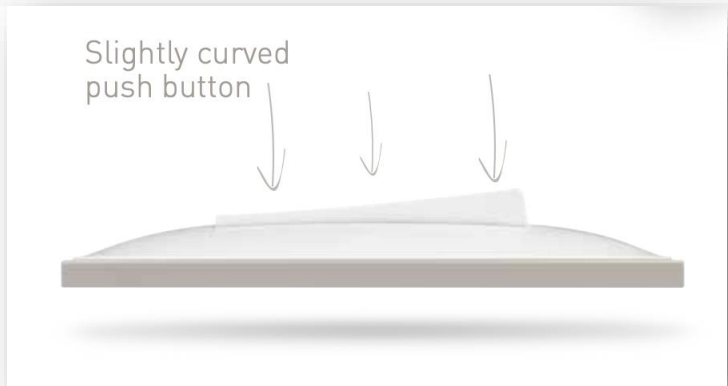
Breakers guard electrical installations against overloads and short circuits assure electrical safety in homes and buildings. The small circuit breaker cuts off the electrical circuit once a fault is found, protecting the wires and reducing the chance of a fire.

CIRCUIT BREAKER

The ABB logo is displayed in a bold, red, sans-serif font.The TajAlSafa logo is written in a stylized, cursive script in a gold or light brown color.



The switches that were placed in the project are Classia models, which are made by the Italian company BTicino International, a world authority on building electric and digital infrastructures.





Astra Elevators

- High-quality Italian elevator characterized by a highly efficient Italian-made engine and equipped with the necessary safety and prevention equipment.



- Max Load: 480 kg
- Capacity: 5 persons



HIKVISION CAMERA DS-2CE16H0T-ITPF

Specification

Camera	
Image Sensor	5 MP CMOS image sensor
Resolution	2560 (H) × 1944 (V)
Min. Illumination	Color: 0.01 Lux @ (F1.2, AGC ON), 0 Lux with IR
Shutter Time	PAL: 1/25 s to 1/50,000 s NTSC: 1/30 s to 1/50,000 s
Lens	2.8 mm, 3.6 mm, 6 mm fixed lens
Horizontal Field of View	85.5° (2.8 mm), 80.1° (3.6 mm), 57.1° (6 mm)
Lens Mount	M12
Day & Night	IR cut filter
Angle Adjustment	Pan: 0° to 360°; Tilt: 0° to 180°; Rotate: 0° to 360°
Synchronization	Internal synchronization
Frame Rate	PAL: 5 MP@20fps, 4 MP@25fps, 1080p@25fps NTSC: 5 MP@20fps, 4 MP@30fps, 1080p@30fps





02

MECHANICAL

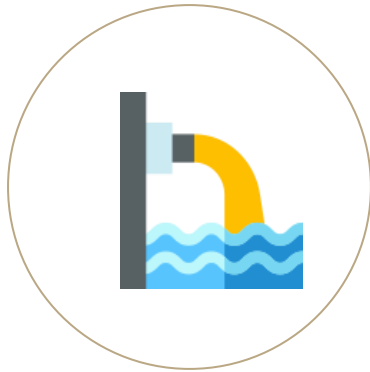
SWIEFIEH PROJECT

Mechanical techniques

The following mechanical systems are included in the project:

1st SERVICE

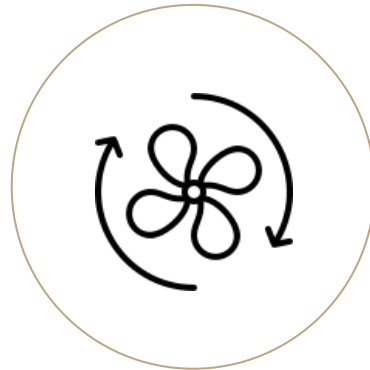
Drainage systems



Drainage systems are installed in accordance with local construction requirements by a certified professional.

2nd SERVICE

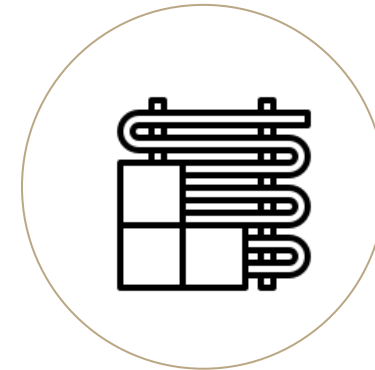
Ventilation



Use fans to circulate fresh air

3rd SERVICE

Heating



Underfloor heating is a method of heating a property by embedding strong and flexible tubing in the floor.

Mechanical techniques

The following mechanical systems are included in the project:

4th SERVICE

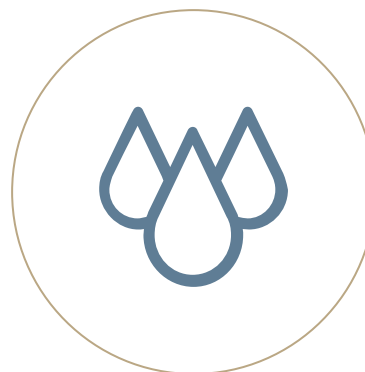
AC



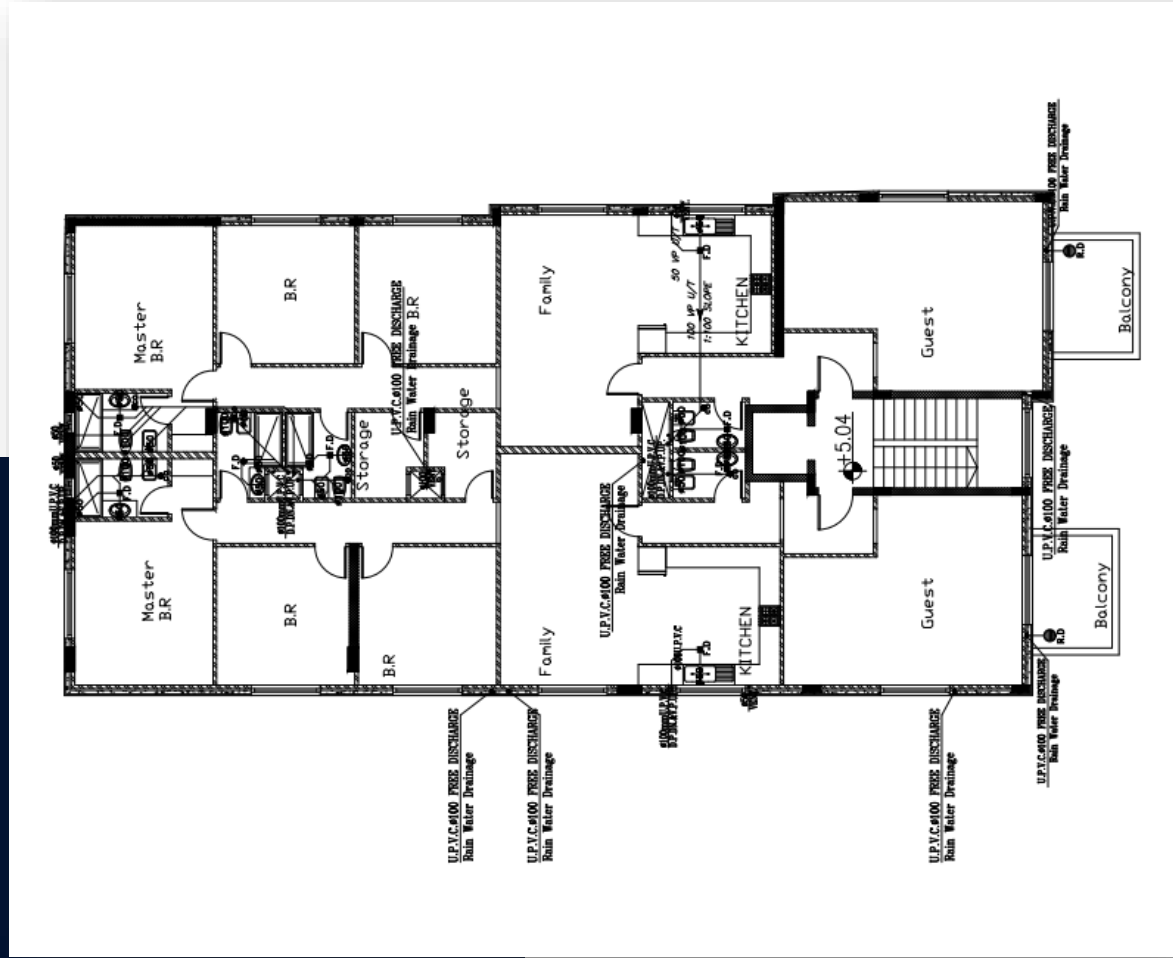
Ducted Air system for the Guest room, Living room & kitchen.

5th SERVICE

Water



4000 L water with 2 Pedrollo pump.



1. DRAINAGE SYSTEM

A drainage system consists of piping that conveys sewage, rainwater, or other liquid waste to the point of disposal in the sewer system or septic tank. Its main objective is to collect and remove wastewater and keep sewer gases out of the building.



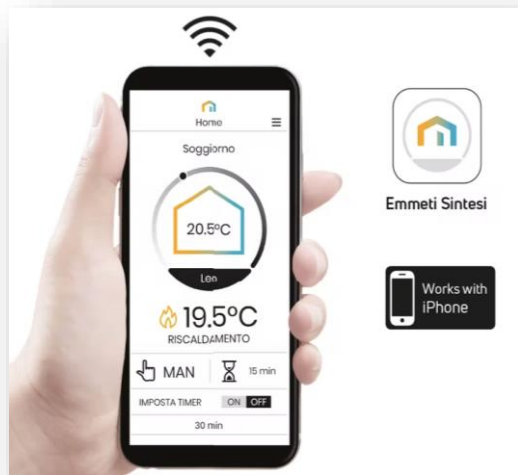
2.UNDERFLOOR HEATING

Underfloor heating is a heating system that embeds powerful and flexible tubing in the floor; heat radiated from the floor is transmitted to the walls, creating an ideal comfortable environment for that inside. It is both efficient and economical and has several advantages over radiators.



2. UNDERFLOOR HEATING

We offer a highly efficient underfloor heating system installed to the highest standards by the United Pioneering Business Company. Underfloor heating networks from the Italian emmeti system and emmeti pipes with an aluminum layer were used. Furthermore, emmeti pipes were used for the illuminator and the rest of the underfloor heating network's requirements for central lines. Heating controllers with WIFI thermostat emmeti.



EMMETI

Available on the
App Store

GET IT ON
Google Play

WORKS WITH
amazon alexa

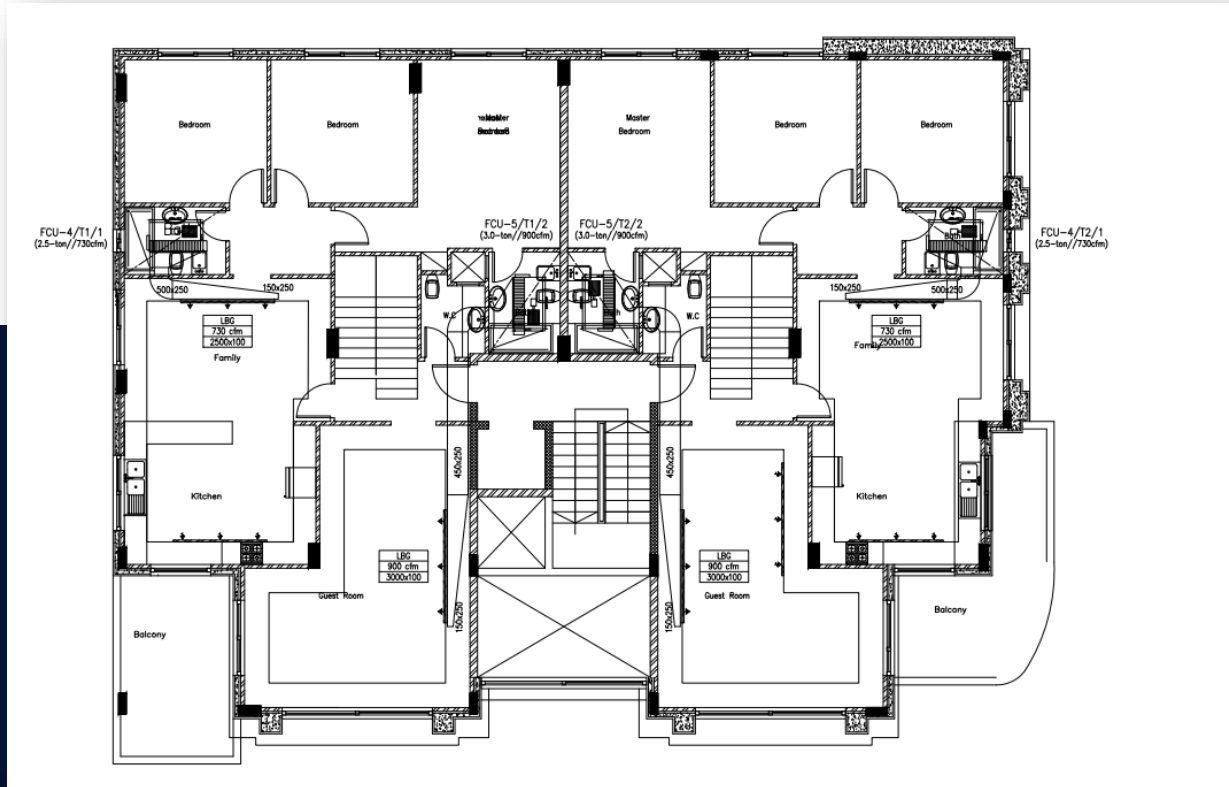
works with the
Google Assistant

2. UNDERFLOOR HEATING

SINTESI MINI Wi-Fi

Wi-Fi-enabled electronic chronothermostat with weekly programming, installation on a flush-mounted box, and space for just two modules intended for controlling room temperature heating (for the winter). The free app, accessible through Google Play and the App Store, enables complete control and programming from your smartphone or tablet. You can report any alarm situations by emailing the designated address.

3.DUCTED AIR CONDITIONING



**Ducted Air Conditioning
(Guest room, kitchen,
living area).**

The Ducted System solutions from Midea Cooling & Heating use the latest technology to enhance indoor air quality. The advanced systems make it simpler to keep a healthier indoor environment and intuitive climate control settings keep your home as cozy as it is energy-efficient.

3. DUCTED AIR CONDITIONING



Ducted air conditioners produce efficient and comfortable indoor environments all year long.

4. CENTRAL GAS



- Central Gas Systems are a more convenient, safe, and secure gas delivery method.



For more information or to book a viewing
tour get in touch with our marketing team.

00962795520443

00962799263003

<http://www.taj-alsafa.com/>

Taj_alsafa@yahoo.com



TAJ ALSAFA

REAL ESTATE DEVELOPMENT
